

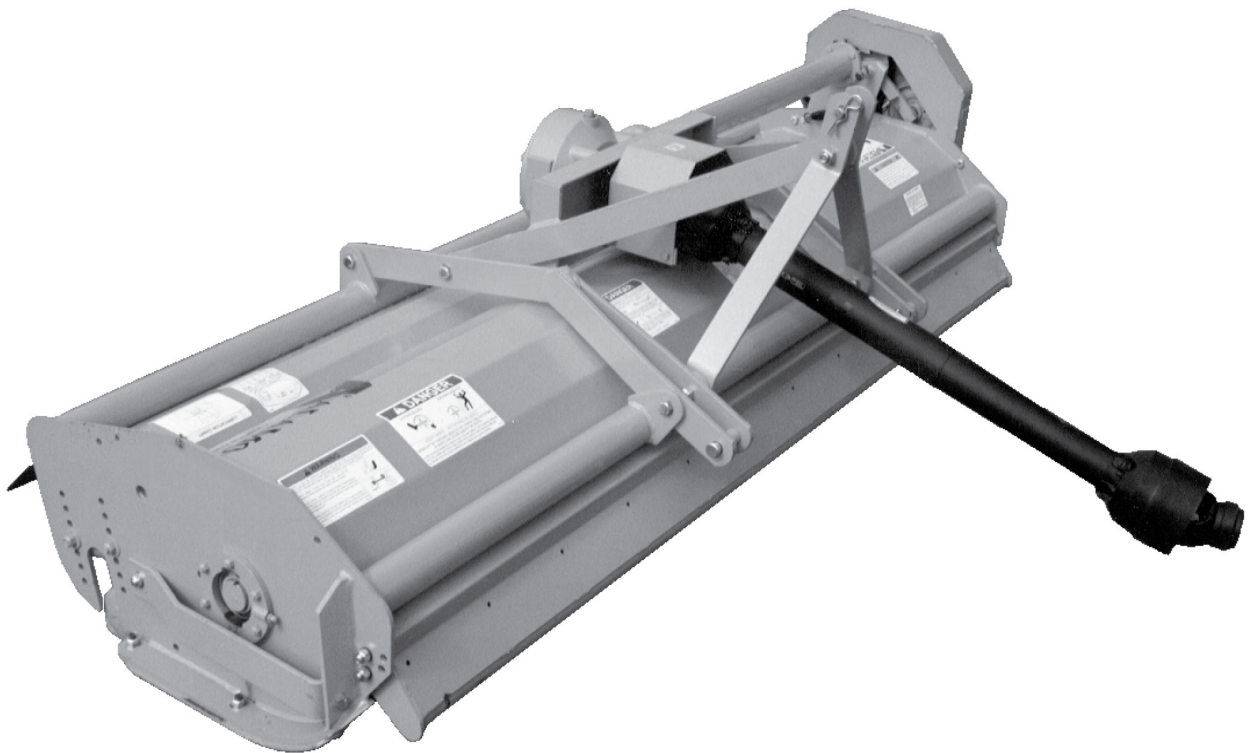
Rev 07-14

Part No. 37002993813P

Flail King 96TM - Flail Mower

Parts Manual

18.5" Offset for KSM60
and KSB6



¡ATENCIÓN!

LEA EL INSTRUCTIVO



Si No Lee Ingles, Pida
Ayuda a Alguien
Que Se Lo Lea Para Que le
Traduzca Las
Medidas de Seguridad



An Operator's Manual was shipped with the equipment in the Manual Canister. This Operator's Manual is an integral part of the safe operation of this machine and must be maintained with the unit at all times. **READ, UNDERSTAND, and FOLLOW** the **SAFETY** and Operation Instructions contained in this manual before operating the equipment. If the Operator's Manual is not with the equipment, contact your dealer or Terrain King 800-882-5756 to obtain a Free copy before operating the equipment.

TO THE OWNER/OPERATOR/DEALER

All implements with moving parts are potentially hazardous. There is no substitute for a cautious, safe-minded operator who recognizes the potential hazards and follows reasonable safety practices. The manufacturer has designed this implement to be used with all its safety equipment properly attached to minimize the chance of accidents.

BEFORE YOU START!! Read the safety messages on the implement and shown in your manual.
Observe the rules of safety and common sense!



DANGER

FAILING TO FOLLOW SAFETY MESSAGES AND OPERATING INSTRUCTION CAN CAUSE SERIOUS BODILY INJURY OR EVEN DEATH TO OPERATOR AND OTHERS IN THE AREA.

1.



2. NO RIDERS. NO CHILDREN OPERATORS.



3. USE SAFETY SHOES, HARD HAT, SAFETY GLASSES, SEAT BELTS, ROPS & OPS.



4. BLOCK UP SECURELY BEFORE WORKING UNDER.



1. Study and understand Operator's Manuals, Safety Decals, and Instructional Decals for tractor and implement to prevent misuse, abuse, and accidents. Practice before operating in a confined area or near passersby.
 - Learn how to stop engine suddenly in an emergency. Be alert for passersby and especially children.
2. Allow no children on or near folding mower or tractor. Allow no riders on tractor or implement. Falling off may cause serious injury or death from being run over by tractor or mower or contact with rotating blades.
3. Operate only with tractor having Roll-Over Protective Structure (ROPS) and with seat belt securely fastened to prevent injury and possible death from falling off or tractor overturn.
 - Personal Protective Equipment such as Hard Hat, Safety Glasses, Safety Shoes, & Ear Plugs are recommended.
4. Block up or support raised machine and all lifted components securely before putting hands or feet under or working underneath any lifted component to prevent crushing injury or death from sudden dropping or inadvertent operation of controls. Make certain area is clear before lowering or folding.
5. Before transporting, put Lift Lever in detent or full-lift position. Install Transport Safety Devices securely on folding mowers. Put Booms securely in Transport Rest.
 - Folding and Boom Mowers have raised center of gravity. Slow down when turning and on hillsides.
6. Make certain that SMV sign, warning lights, and reflectors are clearly visible. Follow local traffic codes.
7. Never operate with Cutting Head or Folding Section raised if passersby, bystanders, or traffic are in the area to reduce possibility of injury or death from objects thrown by Blades under Guards or mower structure.
8. Before dismounting, secure implement in transport position or lower to ground.
 - Put tractor in park or set brake, disengage PTO, stop engine, remove key, and wait until noise of rotation has ceased to prevent crushing by entanglement in rotating parts which could cause injury or death.
 - Never mount or dismount a moving vehicle. Crushing from runover may cause serious injury or death.

5. TRANSPORT SAFELY, LOCK UP.



6. USE SMV, LIGHTS, & REFLECTORS.



7. DO NOT OPERATE WITH CUTTER OR WING RAISED



8. DO NOT MOUNT OR DISMOUNT WHILE MOVING.



02967827

WARRANTY INFORMATION:

Read and understand the complete Warranty Statement found in this Manual. Fill out the Warranty Registration Form in full and return it within 30 Days. Make certain the Serial Number of the Machine is recorded on the Warranty Card and on the Warranty Form that you retain. The use of "will-fit" parts will void your warranty and can cause catastrophic failure with possible injury or death.

BOLT TORQUE

Mounting procedures for mowers will require a significant amount of bolt nut and washer installation.

Frame and structure mounting bolts should be installed using *Red Loctite*, and torqued to the dry values listed in the torque chart based on the bolt size and hardness.

Other structures such as pump mounting bolts should be installed with *Blue Loctite* and torqued to the dry values indicated in the chart.

Bolt tightness should be completed with and checked with a suitable torque wrench.

Torque checks should be completed throughout the life of the mower in accordance with the maintenance chart provided in this manual.



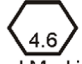

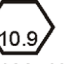

Loose bolts on a frame or in a casting may be a result of:

- Vibration from the mower due to imbalance of the mower blades
- Pulled threads due to over tightening
- Distortion of the hole due to under tightening during installation

Bolts broken or sheared in the mounting structure or tractor may be the result of:

- Improper alignment of the Mounting Plate or Structure such that it is not sitting flat on the mating surface
- Distortion of the bolt due to over-tightening
- Under tightening of the bolts

Check the bolt torque during installation and prior to delivery with a suitable torque wrench.

Proper Torque Values for Standard Bolts			Proper Torque Values for Metric Bolts				
Bolt Diameter			Bolt Diameter				
	Head Marking Three Lines Grade Five	Head Marking Six Lines Grade Eight		Head Marking 4.6	Head Marking 8.8 or 9.8	Head Marking 10.9	Head Marking 12.9
	Pound - Foot Value Dry	Pound - Foot Value Dry		Pound - Foot Value Dry	Pound - Foot Value Dry	Pound - Foot Value Dry	Pound - Foot Value Dry
1/4"	7	10	6mm	3	7	9	10
5/16"	15	22	8mm	6.2	16	23	24
3/8"	26	39	10mm	12	32	45	47
7/16"	42	60	12mm	21	55	79	81
1/2"	64	88	14mm	34	88	126	130
9/16"	100	134	16mm	53	137	196	202
5/8"	128	180	18mm	73	189	270	279
3/4"	227	320	20mm	104	267	382	394
7/8"	365	515	22mm	141	364	520	537
1"	547	772	24mm	179	461	660	680
			27mm	262	676	968	998
			30mm	355	917	1312	1353

To get Newton-Meters multiply pound-foot of torque by 1.356

PARTS ORDERING GUIDE

The following instructions are offered to help eliminate needless delay and error in processing purchase orders for the equipment in this section.

1. The Parts Section is prepared in logical sequence and grouping of parts that belong to the basic machine featured in this manual. Part Numbers and Descriptions are given to help locate the parts and quantities required.
2. The Purchase Order must include the name and address of the person or organization ordering the parts, who should be charged, and if possible, the serial number of the machine for which the parts are ordered.
3. The Purchase Order must clearly list the quantity of each part, the complete and correct part number (be sure to include all periods), and the basic name of the part.
4. The Manufacturer reserves the right to substitute parts where applicable.
5. Some parts are unlisted items which are special production items not normally stocked and are subject to special handling. Request a quotation for such parts before sending a Purchase Order.
6. The Manufacturer reserves the right to change prices without prior notice.



For maximum safety and to guarantee optimum product reliability, always use genuine Terrain King Parts. The use of inferior replacement parts may cause premature or catastrophic failure which could result in serious injury or death. Direct any questions regarding parts to:



Terrain King
1502 E WALNUT ST
SEGUIN TX 78155-5202
800-882-5756

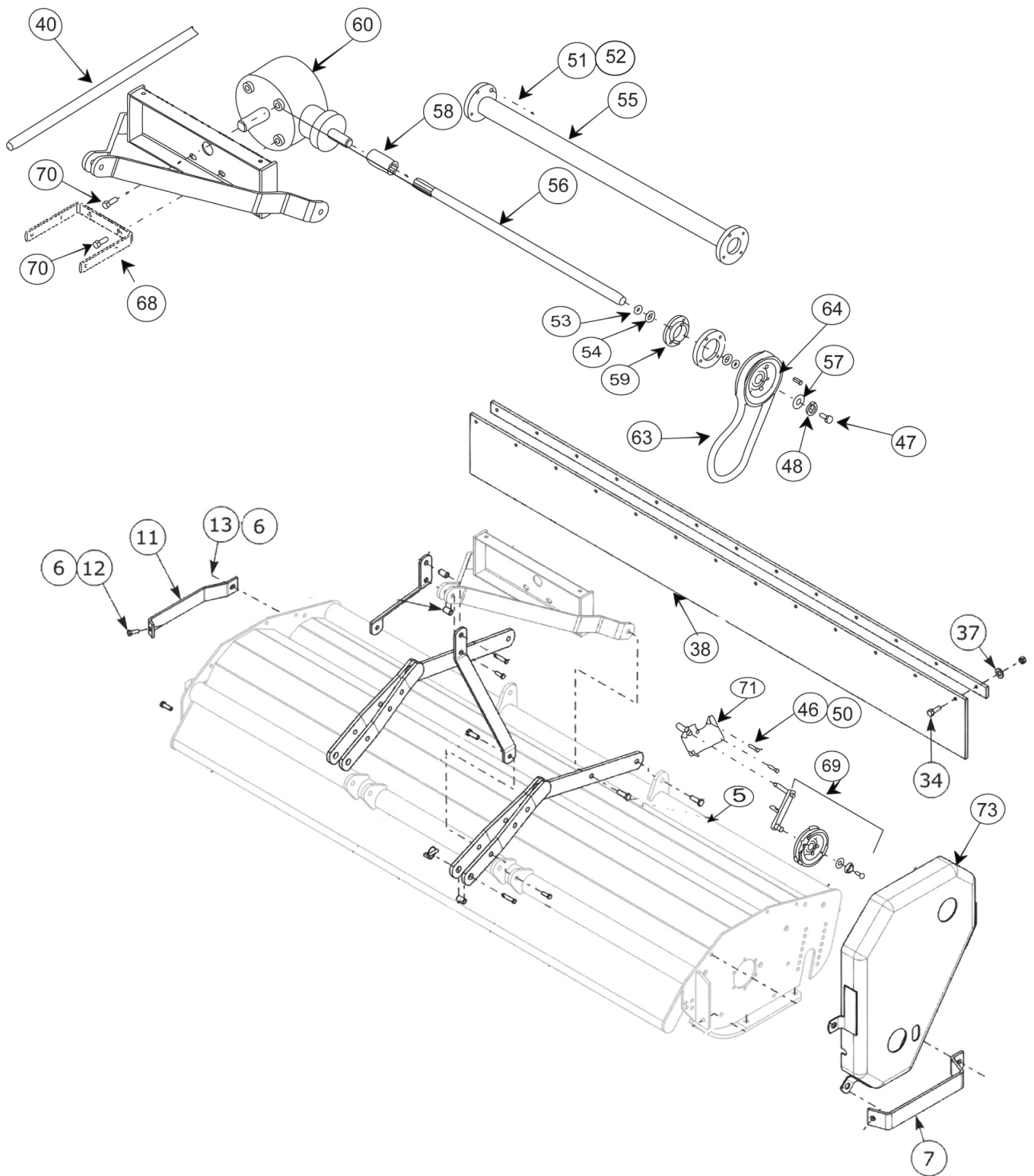


PARTS SECTION

PART NAME INDEX

MOWER - REAR 96 ASSEMBLY.....	4
MOWER - REAR 96 SUB ASSEMBLY.....	6
MOWER ASY - FRAME CAT II.....	8
GEARBOX ASY - PN 34800702673.....	10
DRIVELINE ASSEMBLY - PN 34800001863.....	12
CLUTCH ASSEMBLY - PN 34000754320.....	14
CUTTERSHAFT DRIVE SIDE BEARING ASSEMBLY.....	15
CUTTERSHAFT NON DRIVE BEARING ASSEMBLY.....	16
ROLLER BRACKET ASSEMBLY - LH & RH.....	18
ROLLER BRACKET BEARING ASSEMBLY.....	20

MOWER - REAR 96 ASSEMBLY



37002993813P - Flail King 96 With 18.5 Offset

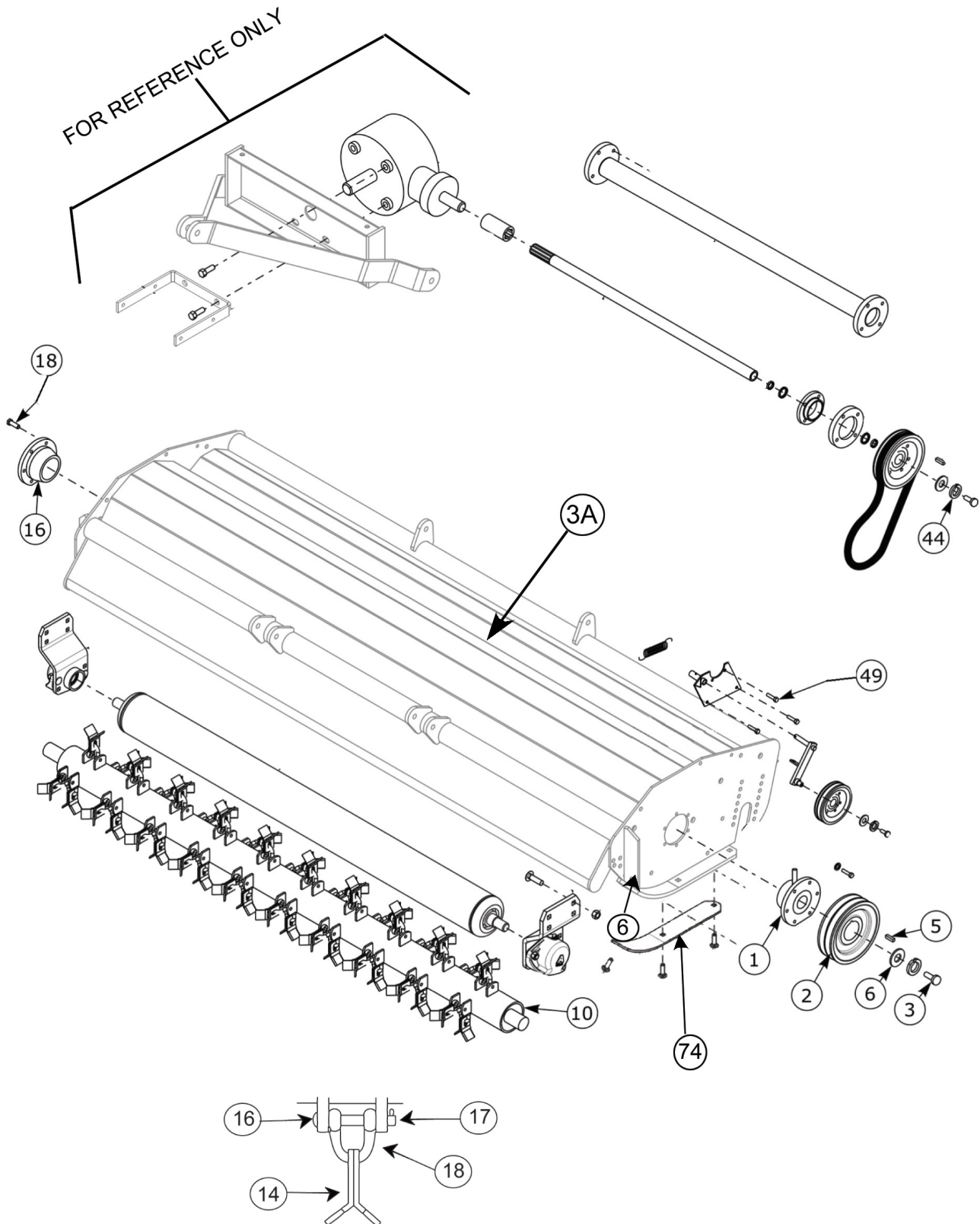
MOWER - REAR 96 ASSEMBLY

Continued...

ITEM	PART NO.	QTY.	DESCRIPTION
-----	348704018	1	REAR MOUNT ASSY 96 3 OZ KNVS
	348704280	1	REAR MOUNT ASSY 96 4 OZ KNVS
5	348704019	1	CUTTER HSG, ASY
-----	348704281	1	CUTTER HSG, ASY
6	30000001800	8	LOCKNUT TLM 1/2 NC PLC
7	34800103117	1	FENDER, GUARD
11	34800103064	1	FENDER
12	30000748823	2	HHCS 1/2-13UNC 1-1/2 GR.5 PL
13	30000024100	16	FLATWASHER STD 1/4 PL
34	30002153100	16	HHCS 1/4 NC 1-1/4-PL
37	30002959924	16	NUT, LOCK TLM 1/4-20 NC PLB
38	34800100753	1	DEFLECTOR, TRASH, 96 (REAR)
39	34802976084	1	BAR FLAP RETAINER 96 REAR
-----	30000017000	4	WASHER, LOCK 1/4 GR8 - YDP
46	3000015800	4	LOCKNUT TLM 3/8-NC PLC
47	30000019300	1	HHCS 1/2 NF 1-1/2 PL5
48	30000019600	1	LOCKWASHER, 1/2, HVY, PL
-----	3000000206	1	NO. 2 RED LUBRICAPS
50	30000023100	4	HHCS 3/8-16UNC 1-1/2 PL5
51	300001727	4	SCREW, FLNG HD 12 PT, CTR-BORE
52	30003101646	4	HIGH ALLOY, L/W 3/8 YZ
53	300100010	1	OUTPUT BEVEL RING
54	300100057	1	RETAINING RING
55	338102874	1	EXTENSION SHAFT HSG
56	330100288	1	EXTENSION SHAFT
57	300101780	1	WASHER, BRG 1-7/16X33/64X3/16
58	300700171	1	COUPLER, W/ZERK, SPLINED
59	348700491	1	HOUSING AND BEARING ASSEMBLY
60	338702673	1	GEARBOX, OILED & TESTED
63	300100706	1	BELT
64	308102501	1	PULLEY, 8.99 DIA X 1.125 BORE
67	348105596	1	SHIELD (PTO)
68	348105597	1	BRACKET, MOUNTING, SHIELD
69	300700494	1	ASSY, IDLER, ARM
70	300700874	1	BAG BOLT
71	348701905	1	ASSY, OUTBRD BRG PLATE
73	348703896	1	GUARD, ASY, BELT

37002993813P - Flail King 96 With 18.5 Offset

MOWER - REAR 96 SUB ASSEMBLY

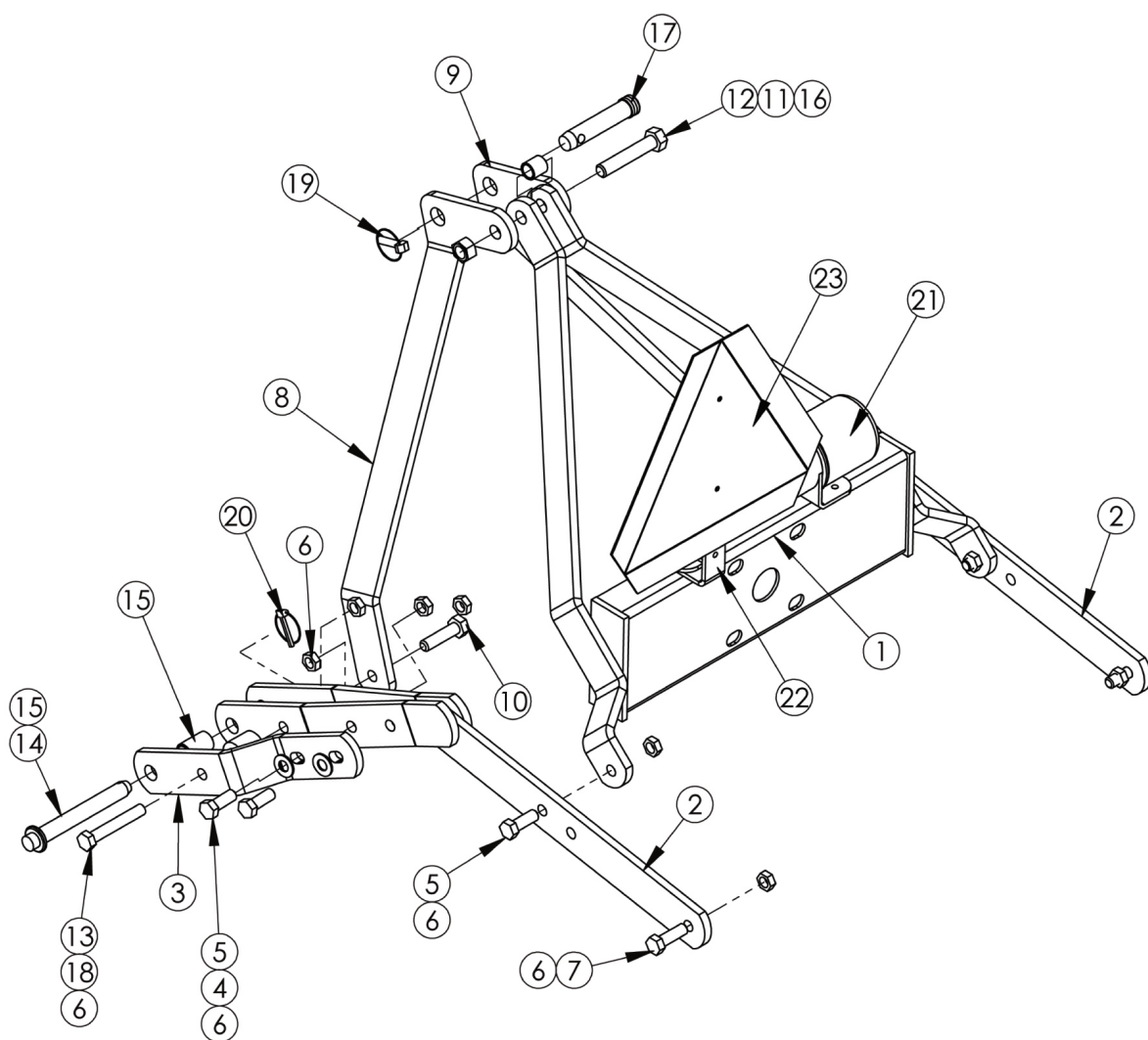


MOWER - REAR 96 SUB ASSEMBLY

Continued...

ITEM	PART NO.	QTY.	DESCRIPTION
1	348704019	1	REAR MOUNT SUB ASSY 96 3 OZ KNVS
-----	348704281	1	REAR MOUNT SUB ASSY 96 4 OZ KNVS
2	34800102652	1	PULLEY 8-3/4-1-15/16 BORE
3	30000000407	1	HHCS, 5/8NF X 1-1/2 ZP5
4	3000000521	1	LOCKWASHER, 5/8 HVY, KANTLINK
5	30000100768	1	KEY, PULLY, CTRSHAFT
6	30000100720	1	WASHER, CUTTERSHAFT
6B	30000001800	8	LOCKNUT, TLM 1/2 NC PLC
7	34800703695	1	BEARING, ASY, CUTTERSHAFT
10	348703942	1	ASY CTRSHFT 96CC W/CC KNIFE
-----	348704016	1	ASY,CTRSHFT 96CC W/ES KNIVESCUTTER HSG, ASY, CC KN ES
20	34800704305	1	BEARING, ASY
21	30000753642	12	HEXB 3/8 NCX 1-14 PL5
24	30000753642	2	CARB 1/2 NC 1-1/2 PL5
30	34800107787	1	WLDMT - ROLLER 96 W/HEX SHAFT
42	34800703977	1	ASY - ROLLER BRKT LH W/HEX BRG
43	34800703978	1	ASY - ROLLER BRKT RH W/HEX BRG
74	348103051	1	SHOE/WEAR PLATE
3A	348107797	1	WLDMT,CTRHSG,96-O.R.18-1/2
-----	30000002700	1	FLATWASHER 1/2 PL STD
	30000015800	1	LOCKNUT TLM 3/8-NC PLCT
	300107468	1	SPACER-CUTTERSHAFT
	308107754	1	WLDMT, FOOT GUARD 96
	30000749130	1	HHCS 1/2-13UNC 1-3/4 PL5BOLT, HEX HD
	30002979042	1	LOCKNUT,SP INSET 1/2 NC PLB
	3002A381312	1	BOLT,PLOW 1/2 NC X 1-1/2 GR.5
14	30002986332	96	3 OZ COURSE CUT KNIFE
-----	30002986276	96	4OZ KNIFE, EXTREME SERVICE
16	348102670	48	PIN HARDENED
17	300000026	48	1/8X3/4 HAMMERLOCK COTTERPN
18	348100761	48	RING COMPLETE

MOWER ASY - FRAME CAT II



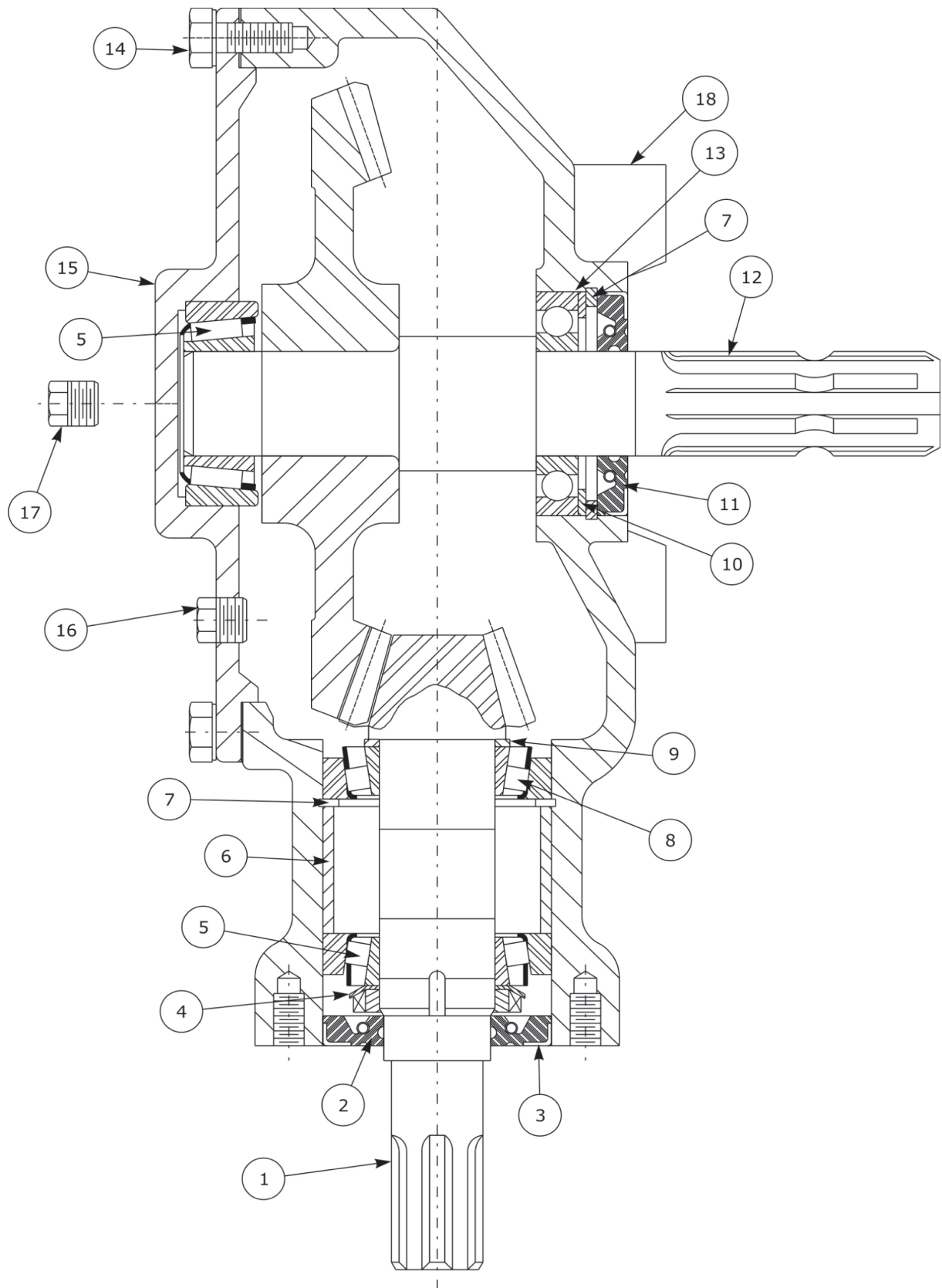
MOWER ASY - FRAME CAT II

Continued...

ITEM	PART NO.	QTY.	DESCRIPTION
1	34802990976	1	WLDMT, GEARBOX MTG
2	348102658	2	WLDMNT, OVERARM ASSY
3	34802988116	2	PLATE, OVERARM HITCH, ADDON
4	30000756077	4	WASHER, 5/8 HARDENED - PLATED
5	3007AH51011146		HHCS 5/8 NC X 1-3/4
6	30000695100	12	NUT, TOPLOCK 5/8 NC PLC
7	30000753753	2	HEXB 5/8 NC 2 PL 8
8	34802990977	1	UPRIGHT, A-FRAME LH
9	34802990978	1	UPRIGHT, A-FRAME RH
10	30000755082	2	HEXB 5/8 NC 2-1/2 PL 8
11	348102667	1	A-FRAME, SPACER
12	30002959332	1	HHCS 3/4 NC 4 PL 8
13	30002967051	2	HHCS 5/8 NC 4 PL 8
14	30802988126	2	PIN, HITCH 7/8 X 6 1/2
15	308103716	2	TUBE, SPACER, LOWER ARM
16	30000037200	1	NUT, HEX TOPLOCK 3/4 NC GR.C PL
17	30802991412	1	PIN, TOP LINK CATII
18	30802988125	2	TUBE, HITCH ADDON SPACER
19	3002196	1	CLIP (LYNCH PIN), 13/32 DIA.
20	30003100493	2	PIN-LYNCH 1/4
21	30000776031	1	CANISTER, PARTS MANUAL
22	34802993546	1	BRACKET MTG. SMV SIGN
23	34003200347	1	EMBLEM, SMV
24	30010062000	1	HHCS 1/4 NC 1-1/2 PL 5

37002993813P - Flail King 96 With 18.5 Offset

GEARBOX ASY - PN 34800702673



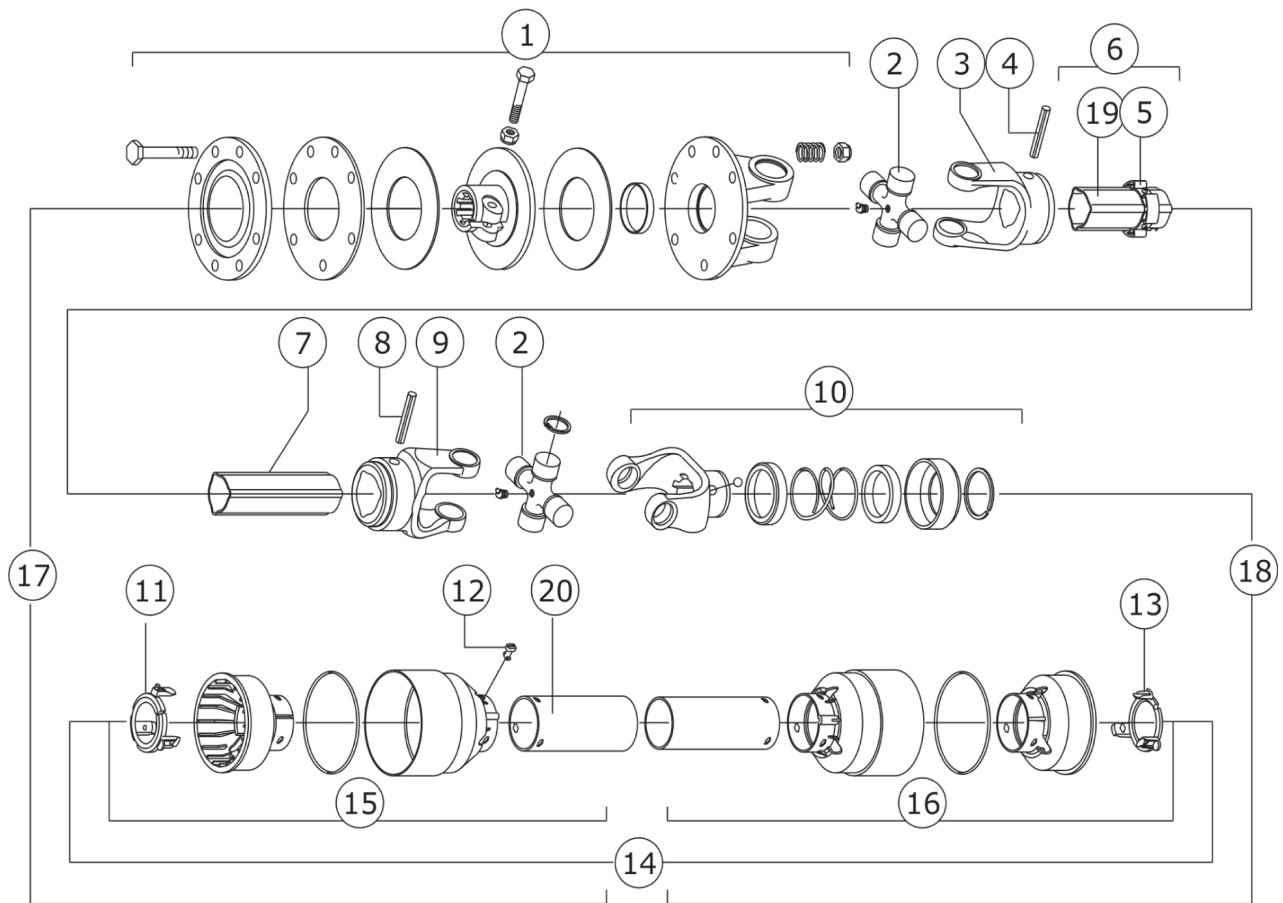
37002993813P - Flail King 96 With 18.5 Offset

GEARBOX ASY - PN 34800702673

Continued...

ITEM	PART NO.	QTY.	DESCRIPTION
-----	34800702673	1	GEARBOX ASY
1	34000001718	1	PINION
2	34000001719	1	SEAL
3	34000001717	1	NUT
4	34000001720	1	SPRING WASHER
5	34000754757	2	BEARING, ROLLER
6	34000001716	1	SPACER
7	34000754752	2	CIRCLIP, INTERNAL
8	34000001722	1	BEARING, ROLLER
9	34000753222	2	SHIM
10	340000754761	1	SHIM
11	34000001724	1	SEAL
12	34000001725	1	SHAFT W/ CROWN WHEEL
13	34000754459	1	BEARING, BALL
14	34000001708	8	BOLT
15	34000001710	1	COVER
16	34000755633	2	PLUG
17	34000000055	2	PLUG, DRAIN
18	34000002516	1	HOUSING
-----	34000769800	1	GASKET

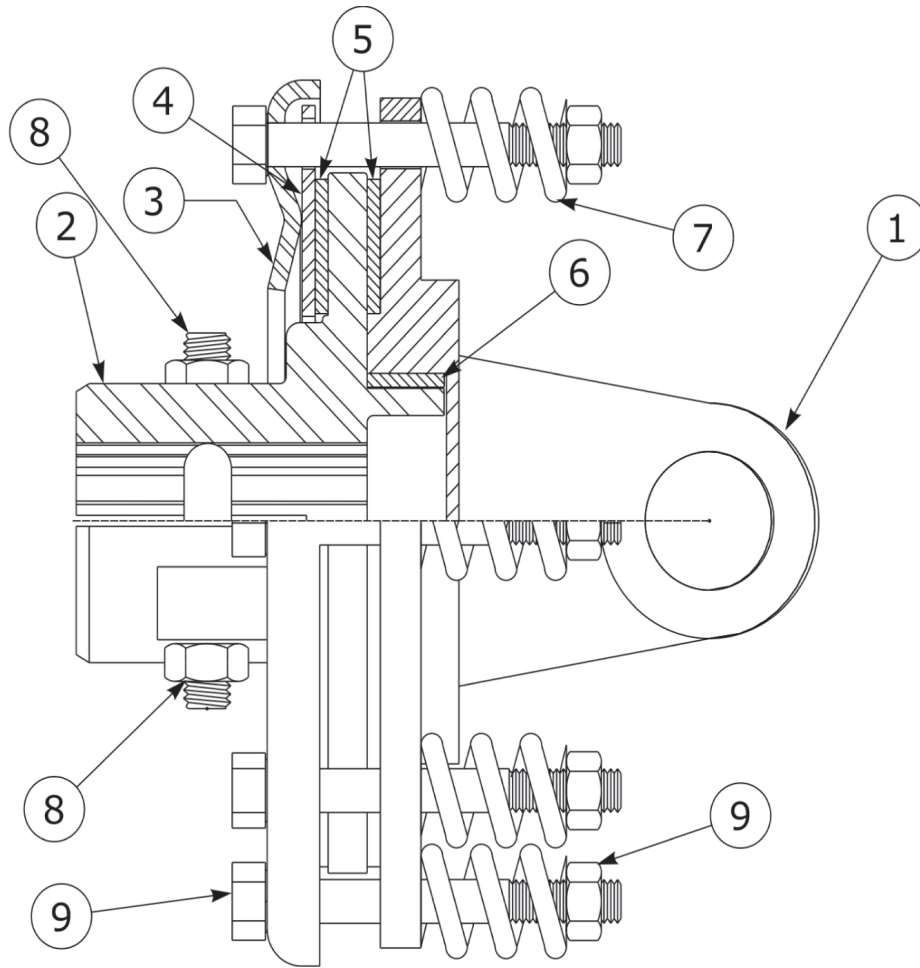
DRIVELINE ASSEMBLY - PN 34800001863



DRIVELINE ASSEMBLY - PN 34800001863**Continued...**

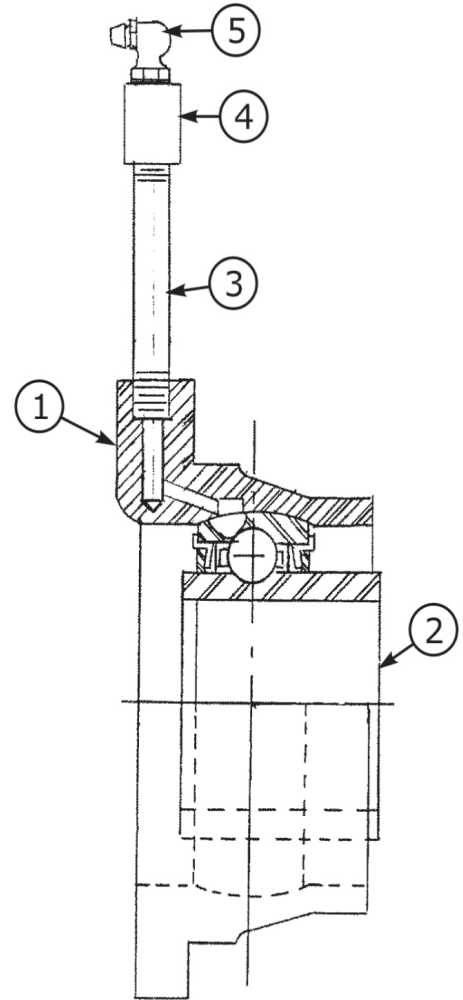
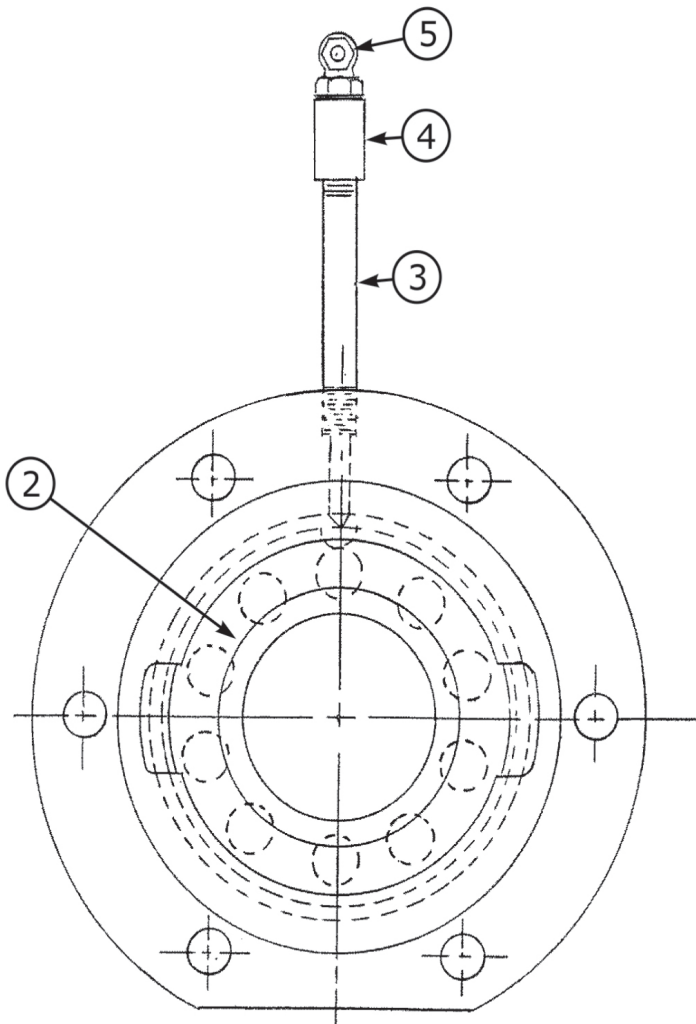
ITEM	PART NO.	QTY.	DESCRIPTION
1	30000754320	1	CLUTCH, 2 PLATE, 1-3
2	30000752896	2	CROSS BEARING SERIES
3	30000754154	1	YOKE, OUTER TUBE #6
4	30000754167	1	PIN, ROLL 10MM X 75MM
5	30000772529	1	BUSHING WITH GREASE NIPPLE
6	30000760242	1	OUTER TUBE
7	30000760243	1	INNER TUBE
8	30000754167	1	PIN, ROLL 10MM X 75MM
9	30000754153	1	YOKE INNER #6
10	30000752883	1	YOKE, 1-3/8-6 #6 SLID
11	30000754332	1	LOCKING COLLAR OUTER SHIELD
12	30000754330	6	BOLT, NYLON - SAFETY SHIELD
13	30000754331	1	LOCKING COLLAR INNER SHIELD
14	30000760250A	1	COMPLETE SHIELD
15	30000760249A	1	HALF OUTER SHIELD
16	30000760248A	1	HALF INNER SHIELD
17	30000760244	1	DRIVELINE, ASY, OUTER HALF
18	30000760245	1	DRIVELINE, ASY, INNER HALF
19	D546	1	DECAL, MISSING (NOT SHOWN)
20	D697	1	DECAL, ROTATING DRIVELINE (NOT SHOWN)

CLUTCH ASSEMBLY - PN 34000754320



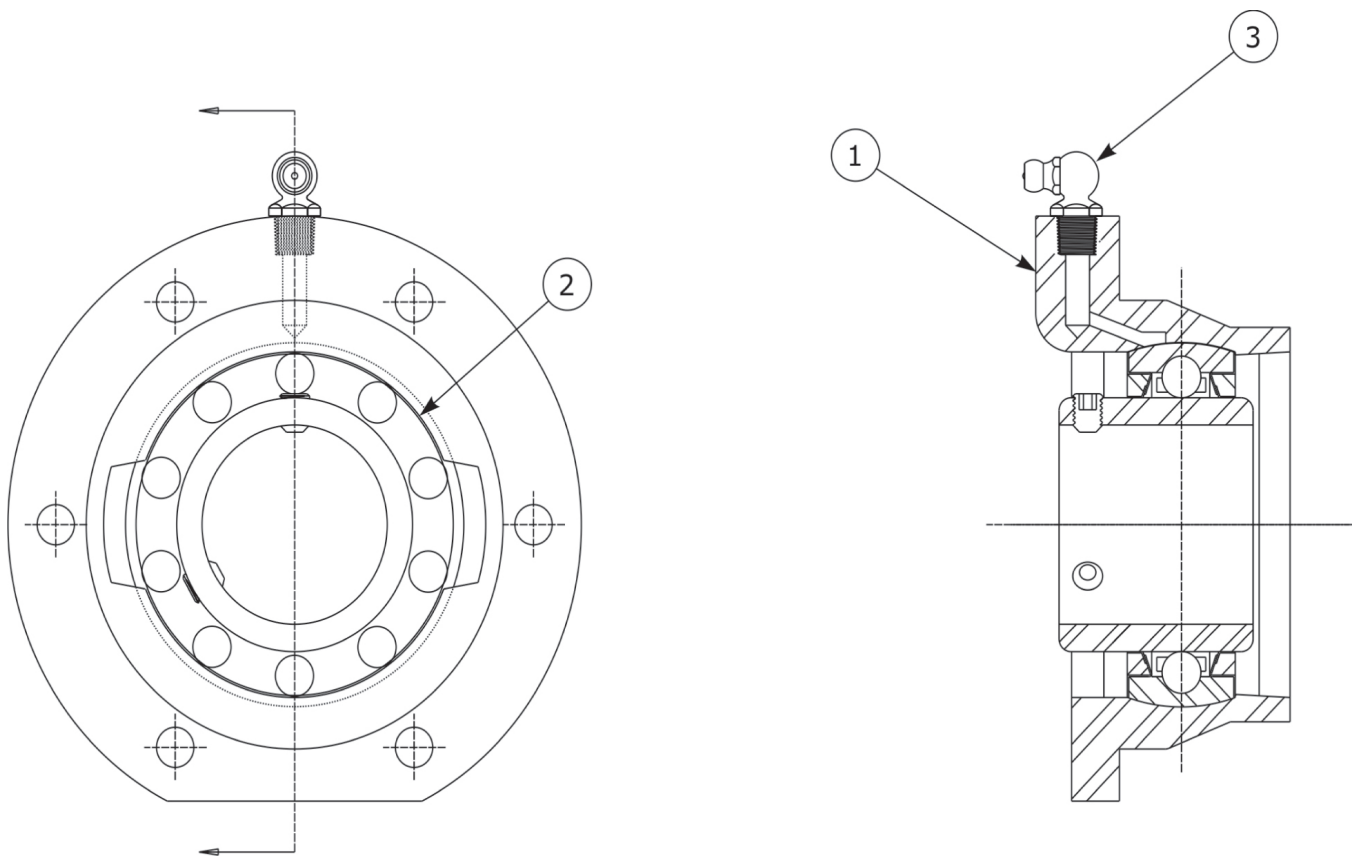
ITEM	PART NO.	QTY.	DESCRIPTION
----	34000754320	1	CLUTCH, 2 PLATE, 1-3
1	30000754302	1	YOKE, CLUTCH SERIES 6
2	30000754317	2	HUB,CLUTCH - 1-3/8-6 SPL.
3	30000766810	2	PLATE,PRESSURE
4	30000754314	1	PLATE WITH HOLES
5	30000754202	1	CLUTCH LINING
6	30000754301	1	BUSHING
7	30000754315	8	SPRING
8	30000752903	2	BOLT & NUT - M12 X 65
9	30000773295	8	BOLT 10 X 85 & NUT

CUTTERSHAFT DRIVE SIDE BEARING ASSEMBLY



ITEM	PART NO.	QTY.	DESCRIPTION
----	34800703695	1	BEARING, ASY, CUTTERSHAFT
1	30000107469	1	HOUSING- C/S BRG
2	30000002315	1	BEARING CUTTERSHAFT
3	30000002347	1	NIPPLE- 1/8 MP 3 LONG SCH.40
4	30000002348	1	COUPLING- 1/8 FP SCH.40
5	30000752176	1	GREASE FTG,1/8MP 90DEG

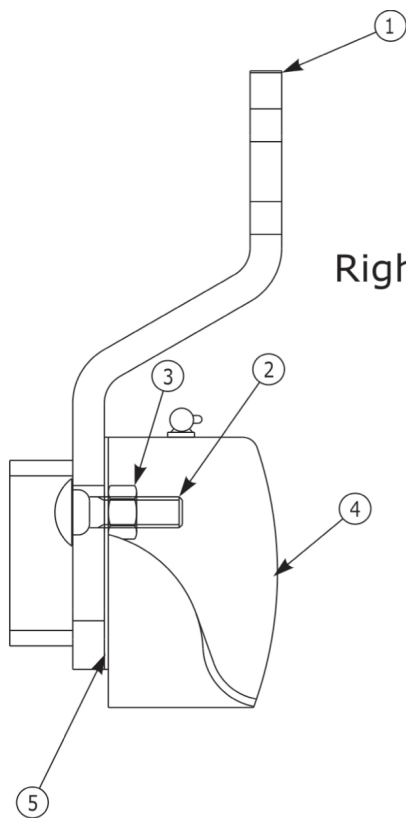
CUTTERSHAFT NON DRIVE BEARING ASSEMBLY



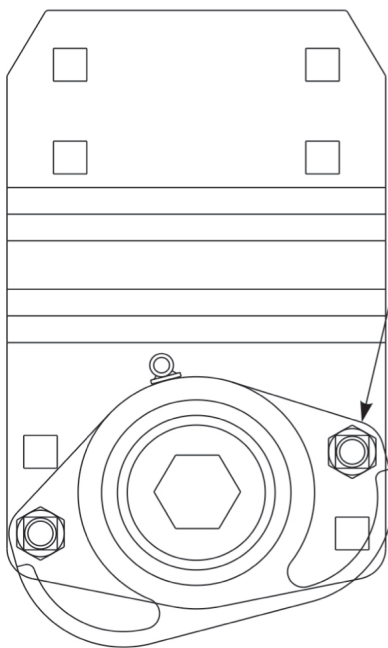
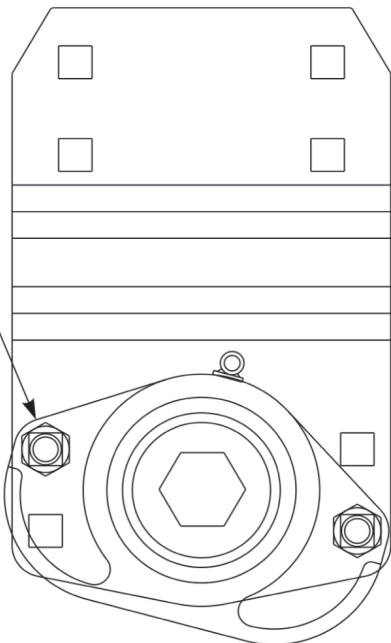
ITEM	PART NO.	QTY.	DESCRIPTION
----	34800704305	1	ASSEMBLY BEARING ,CTRSHT (NON-DRIVE)
1	30000107469	1	HOUSING- C/S BRG
2	30000002530	1	BEARING,CUTTERSHFT (NON-DRIVE)
3	30000752176	1	GREASE FTG,1/8MP 90DEG

THIS PAGE INTENTIONALLY LEFT BLANK

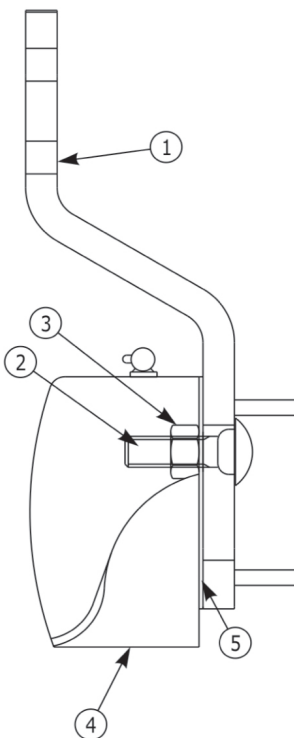
ROLLER BRACKET ASSEMBLY - LH & RH



Right Hand Assembly



Left Hand Assembly

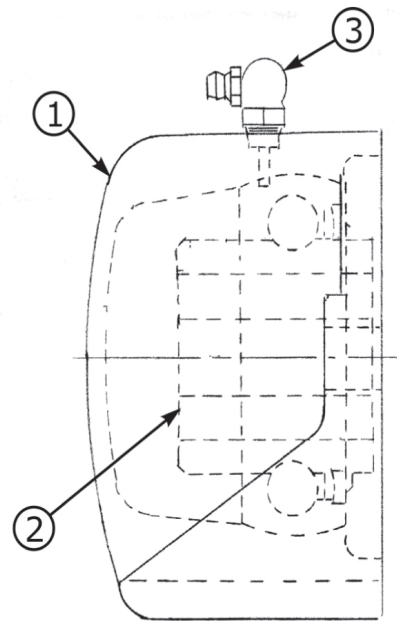
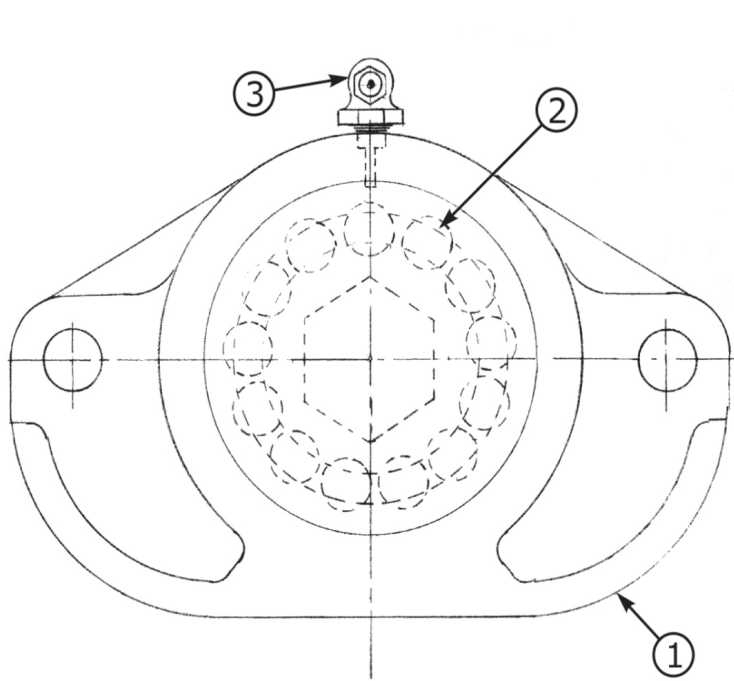


ROLLER BRACKET ASSEMBLY - LH & RH

Continued...

ITEM	PART NO.	QTY.	DESCRIPTION
-----	34800703978	1	ROLLER BRKT ASY, RH
	34800703977	1	ROLLER BRKT ASY, LH
1	30002976761	1	WELDMENT, ROLLER BRKT
2	30000000516	2	CARRIAGE BOLT
3	30000001800	2	LOCKNUT TLM 1/2 NC PLC
4	30000703976	1	BEARING
5	30000002037	1	SEAL

ROLLER BRACKET BEARING ASSEMBLY



ITEM	PART NO.	QTY.	DESCRIPTION
----	30000703976	1	ASY- ROLLER BRG W/HEX BORE
1	30000107340	1	HOUSING,BEARING,MACHINED
2	30000002486	1	BEARING-REAR ROLLER W/HEX BORE
3	30000002039	1	ASY GREASE FTG 1/4-28 90 DEG

TERRAIN KING

Limited Warranty

1. Limited Warranties

- 1.01. Terrain King ("Manufacturer") warrants for one year from the purchase date to the original non-commercial, governmental, or municipal purchaser and warrants for six months to the original commercial or industrial purchaser ("Purchaser", as applicable) that the goods purchased are free from defects in material or workmanship.
- 1.02. Manufacturer will replace for the Purchaser any part or parts found, upon examination at one of its factories, to be defective under normal use and service due to defects in material or workmanship during the applicable warranty period.
- 1.03. This limited warranty does not apply to any part of the goods which has been subjected to improper or abnormal use, negligence, alteration, modification, or accident, damaged due to lack of maintenance or use of wrong fuel, oil, or lubricants, or which has served its normal life. This limited warranty does not apply to any part of any internal combustion engine, or expendable items such as blades, shields, guards, or pneumatic tires except as specifically found in your operator's manual.
- 1.04. No employee, agent, dealer, or other person is authorized to give any warranties of any nature on behalf of Manufacturer.

2. Remedies And Procedures

- 2.01. This limited warranty is not effective unless the purchaser returns the registration and warranty form to Manufacturer within 30 days of purchase.
- 2.02. Purchaser claims must be made in writing to the authorized dealer ("dealer") from whom Purchaser purchased the goods or an approved authorized dealer ("dealer") within 30 days after Purchaser learns of the facts on which the claim is based.
- 2.03. Purchaser is responsible for returning the goods in question to the dealer.
- 2.04. If after examining the goods and/or parts in question, Manufacturer finds them to be defective under normal use and service due to defects in material or workmanship, Manufacturer will:
 - (A) repair or replace the defective goods or part(s) or
 - (B) reimburse Purchaser for the cost of the part(s) and reasonable labor charges (as determined by Manufacturer) if Purchaser paid for the repair and/or replacement prior to the final determination of applicability of the warranty by Manufacturer. The choice of remedy shall belong to Manufacturer.
- 2.05. Purchaser is responsible for any labor charges exceeding a reasonable amount as determined by Manufacturer and for returning the goods to the dealer, whether or not the claim is approved. Purchaser is responsible for the transportation cost for the goods or part(s) from the dealer to the designated factory.

3. Limitation Of Liability

- 3.01. MANUFACTURER DISCLAIMS ANY EXPRESS (EXCEPT AS SET FORTH HEREIN) AND IMPLIED WARRANTIES WITH RESPECT TO THE GOODS INCLUDING, BUT NOT LIMITED TO, MERCHANTABILITY AND FITNESS FOR A PARTICULAR PURPOSE.
- 3.02. MANUFACTURER MAKES NO WARRANTY AS TO THE DESIGN, CAPABILITY, CAPACITY, OR SUITABILITY FOR USE OF THE GOODS.
- 3.03. EXCEPT AS PROVIDED HEREIN, MANUFACTURER SHALL HAVE NO LIABILITY OR RESPONSIBILITY TO PURCHASER OR ANY OTHER PERSON OR ENTITY WITH RESPECT TO ANY LIABILITY, LOSS, OR DAMAGE CAUSED OR ALLEGED TO BE CAUSED DIRECTLY OR INDIRECTLY BY THE GOODS INCLUDING, BUT NOT LIMITED TO, ANY INDIRECT, SPECIAL, CONSEQUENTIAL, OR INCIDENTAL DAMAGES RESULTING FROM THE USE OR OPERATION OF THE GOODS OR ANY BREACH OF THIS WARRANTY. NOTWITHSTANDING THE ABOVE LIMITATIONS AND WARRANTIES, MANUFACTURER'S LIABILITY HEREUNDER FOR DAMAGES INCURRED BY PURCHASER OR OTHERS SHALL NOT EXCEED THE PRICE OF THE GOODS.
- 3.04. NO ACTION ARISING OUT OF ANY CLAIMED BREACH OF THIS WARRANTY OR TRANSACTIONS UNDER THIS WARRANTY MAY BE BROUGHT MORE THAN TWO (2) YEARS AFTER THE CAUSE OF ACTION HAS OCCURRED.

4. Miscellaneous

- 4.01. Proper venue for any lawsuits arising from or related to this limited warranty shall be only in Guadalupe County, Texas.
- 4.02. Manufacturer may waive compliance with any of the terms of this limited warranty, but no waiver of any terms shall be deemed to be a waiver of any other term.
- 4.03. If any provision of this limited warranty shall violate any applicable law and is held to be unenforceable, then the invalidity of such provision shall not invalidate any other provisions herein.
- 4.04. Applicable law may provide rights and benefits to Purchaser in addition to those provided herein.

Keep for your records

Attention: Purchaser should fill in the blanks below for his reference when buying repair parts and/or for proper machine identification when applying for warranty.

Terrain King Implement Model _____ Serial Number _____
Date Purchased _____ Dealer _____

Attention:
Read your operator's manual



Terrain King
1502 E WALNUT ST
SEGUIN TX 78155-5202
800-882-5756

TERRAINKING™

Engineering Practical Solutions™

TO THE OWNER/OPERATOR/DEALER

To keep your implement running efficiently and safely, read your manuals thoroughly and follow these directions and the Safety Messages in this Manual. The Table of Contents clearly identifies each section where you can easily find the information you need.

The OCCUPATIONAL SAFETY AND HEALTH ACT (1928.51 Subpart C) makes these minimum safety requirements of tractor operators:

REQUIRED OF THE OWNER

1. Provide a Roll-Over-Protective Structure that meets the requirements of this standard.
2. Provide seat belts that meet the requirements of this paragraph of this standard and SAE J4C.
3. Ensure that each employee uses such seat belt while the tractor is moving.
4. Ensure that each employee tightens the seat belt sufficiently to confine the employee to the protected area provided by the ROPS.

REQUIRED OF THE OPERATOR

1. Securely fasten seat belt if the tractor has a ROPS.
2. Where possible, avoid operating the tractor near ditches, embankments, and holes.
3. Reduce speed when turning, crossing slopes, and on rough, slick, or muddy surfaces.
4. Stay off slopes too steep for safe operation.
5. Watch where you are going, especially at row ends, on roads, and around trees.
6. Do not permit others to ride.
7. Operate the tractor smoothly, no jerky turns, starts, or stops.
8. Hitch only to the draw bar and hitch points recommended by the tractor manufacturer.
9. When the tractor is stopped, set brakes securely and use park lock, if available.



Keep children away from danger all day, every day...



Equip tractors with rollover protection (ROPS) and keep all machinery guards in place...



Please work, drive, play and live each day with care and concern for your safety and that of your family and fellow citizens.

