

Rev 03-21

Part No. 37002993751P

KSB5 & KSB6 Parts Manual

**5 & 6 Ft Sickle
Bar Mower
With Hydraulic
Break-Away**



¡ATENCIÓN!

LEA EL INSTRUCTIVO



Si No Lee Ingles, Pida
Ayuda a Alguien
Que Se Lo Lea Para Que le
Traduzca Las
Medidas de Seguridad



An Operator's Manual was shipped with the equipment in the Manual Canister. This Operator's Manual is an integral part of the safe operation of this machine and must be maintained with the unit at all times. **READ, UNDERSTAND, and FOLLOW** the **SAFETY** and Operation Instructions contained in this manual before operating the equipment. If the Operator's Manual is not with the equipment, contact your dealer or Terrain King 800-882-5756 to obtain a Free copy before operating the equipment.

TO THE OWNER/OPERATOR/DEALER

All implements with moving parts are potentially hazardous. There is no substitute for a cautious, safe-minded operator who recognizes the potential hazards and follows reasonable safety practices. The manufacturer has designed this implement to be used with all its safety equipment properly attached to minimize the chance of accidents.

BEFORE YOU START!! Read the safety messages on the implement and shown in your manual.
Observe the rules of safety and common sense!



DANGER

FAILING TO FOLLOW SAFETY MESSAGES AND OPERATING INSTRUCTION CAN CAUSE SERIOUS BODILY INJURY OR EVEN DEATH TO OPERATOR AND OTHERS IN THE AREA.

1.



2. NO RIDERS. NO CHILDREN OPERATORS.



3. USE SAFETY SHOES, HARD HAT, SAFETY GLASSES, SEAT BELTS, ROPS & OPS.



4. BLOCK UP SECURELY BEFORE WORKING UNDER.



1. Study and understand Operator's Manuals, Safety Decals, and Instructional Decals for tractor and implement to prevent misuse, abuse, and accidents. Practice before operating in a confined area or near passersby.

- Learn how to stop engine suddenly in an emergency. Be alert for passersby and especially children.

2. Allow no children on or near folding mower or tractor. Allow no riders on tractor or implement. Falling off may cause serious injury or death from being run over by tractor or mower or contact with rotating blades.

3. Operate only with tractor having Roll-Over Protective Structure (ROPS) and with seat belt securely fastened to prevent injury and possible death from falling off or tractor overturn.

- Personal Protective Equipment such as Hard Hat, Safety Glasses, Safety Shoes, & Ear Plugs are recommended.

4. Block up or support raised machine and all lifted components securely before putting hands or feet under or working underneath any lifted component to prevent crushing injury or death from sudden dropping or inadvertent operation of controls. Make certain area is clear before lowering or folding.

5. Before transporting, put Lift Lever in detent or full-lift position. Install Transport Safety Devices securely on folding mowers. Put Booms securely in Transport Rest.

- Folding and Boom Mowers have raised center of gravity. Slow down when turning and on hillsides.

6. Make certain that SMV sign, warning lights, and reflectors are clearly visible. Follow local traffic codes.

7. Never operate with Cutting Head or Folding Section raised if passersby, bystanders, or traffic are in the area to reduce possibility of injury or death from objects thrown by Blades under Guards or mower structure.

8. Before dismounting, secure implement in transport position or lower to ground.

- Put tractor in park or set brake, disengage PTO, stop engine, remove key, and wait until noise of rotation has ceased to prevent crushing by entanglement in rotating parts which could cause injury or death.
- Never mount or dismount a moving vehicle. Crushing from runover may cause serious injury or death.

5. TRANSPORT SAFELY, LOCK UP.



6. USE SMV, LIGHTS, & REFLECTORS.



7. DO NOT OPERATE WITH CUTTER OR WING RAISED



8. DO NOT MOUNT OR DISMOUNT WHILE MOVING.



02967827

WARRANTY INFORMATION:

Read and understand the complete Warranty Statement found in this Manual. Fill out the Warranty Registration Form in full and return it within 30 Days. Make certain the Serial Number of the Machine is recorded on the Warranty Card and on the Warranty Form that you retain. The use of "will-fit" parts will void your warranty and can cause catastrophic failure with possible injury or death.

BOLT TORQUE

Mounting procedures for mowers will require a significant amount of bolt nut and washer installation.

Frame and structure mounting bolts should be installed using *Red Loctite*, and torqued to the dry values listed in the torque chart based on the bolt size and hardness.

Other structures such as pump mounting bolts should be installed with *Blue Loctite* and torqued to the dry values indicated in the chart.

Bolt tightness should be completed with and checked with a suitable torque wrench.

Torque checks should be completed throughout the life of the mower in accordance with the maintenance chart provided in this manual.



Loose bolts on a frame or in a casting may be a result of:

- Vibration from the mower due to imbalance of the mower blades
- Pulled threads due to over tightening
- Distortion of the hole due to under tightening during installation


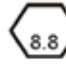
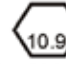
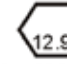
Bolts broken or sheared in the mounting structure or tractor may be the result of:

- Improper alignment of the Mounting Plate or Structure such that it is not sitting flat on the mating surface
- Distortion of the bolt due to over-tightening
- Under tightening of the bolts

Check the bolt torque during installation and prior to delivery with a suitable torque wrench.

Proper Torque Values for Standard Bolts		
Bolt Diameter	 Head Marking Three Lines Grade Five	 Head Marking Six Lines Grade Eight
	Pound - Foot Value Dry	Pound - Foot Value Dry
1/4"	7	10
5/16"	15	22
3/8"	26	39
7/16"	42	60
1/2"	64	88
9/16"	100	134
5/8"	128	180
3/4"	227	320
7/8"	365	515
1"	547	772

To get Newton-Meters multiply pound-foot of torque by 1.356

Proper Torque Values for Metric Bolts				
Bolt Diameter	 Head Marking 4.6	 Head Marking 8.8 or 9.8	 Head Marking 10.9	 Head Marking 12.9
	Pound - Foot Value Dry	Pound - Foot Value Dry	Pound - Foot Value Dry	Pound - Foot Value Dry
6mm	3	7	9	10
8mm	6.2	16	23	24
10mm	12	32	45	47
12mm	21	55	79	81
14mm	34	88	126	130
16mm	53	137	196	202
18mm	73	189	270	279
20mm	104	267	382	394
22mm	141	364	520	537
24mm	179	461	660	680
27mm	262	676	968	998
30mm	355	917	1312	1353

CHANGE PAGES

The following is a listing of pages that have been changed since the latest publication date for the overall document.

[illegible]

PARTS ORDERING GUIDE

The following instructions are offered to help eliminate needless delay and error in processing purchase orders for the equipment in this section.

1. The Parts Section is prepared in logical sequence and grouping of parts that belong to the basic machine featured in this manual. Part Numbers and Descriptions are given to help locate the parts and quantities required.
2. The Purchase Order must include the name and address of the person or organization ordering the parts, who should be charged, and if possible, the serial number of the machine for which the parts are ordered.
3. The Purchase Order must clearly list the quantity of each part, the complete and correct part number (be sure to include all periods), and the basic name of the part.
4. The Manufacturer reserves the right to substitute parts where applicable.
5. Some parts are unlisted items which are special production items not normally stocked and are subject to special handling. Request a quotation for such parts before sending a Purchase Order.
6. The Manufacturer reserves the right to change prices without prior notice.



For maximum safety and to guarantee optimum product reliability, always use genuine Terrain King Parts. The use of inferior replacement parts may cause premature or catastrophic failure which could result in serious injury or death. Direct any questions regarding parts to:



Terrain King
1502 E WALNUT ST
SEGUIN TX 78155-5202
800-882-5756

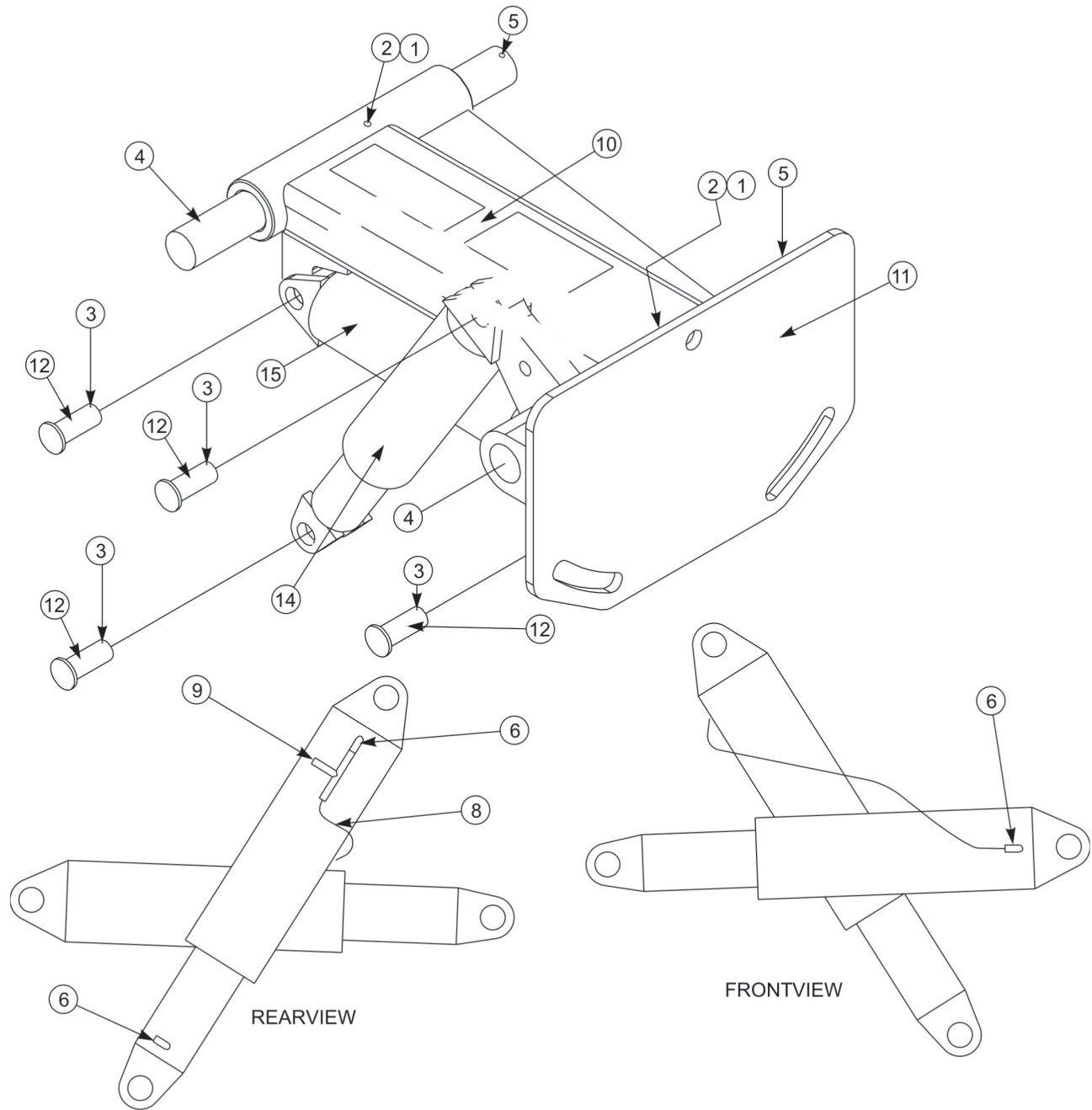


PARTS SECTION

PART NAME INDEX

CARRIAGE ARM ASY - RH WG - PN 34802974362.....	4
HYD CYL ASY - BAR TILT - PN 3380693500A.....	6
HYD CYL ASY - CURB LIFT - PN 3380693400A.....	7
COMMON COMPONENT BOX - SINGLE WG - PN 30002981751.....	8
SWITCH KNOB PN 30002982367.....	10
HYD VALVE ASY W-FITTINGS - PN 33802982077.....	11
HYD VALVE ASY W-O FITTINGS PN 33802974306.....	12
BREAKAWAY VALVE KIT PN 32002982296.....	14
HYD TANK ASY.....	16
HYD VALVE SOLENOID ASY - PN 33002988789.....	18
HYD FILTER ASY - PN 33802974309.....	19
SKID SHOE & ACTUATOR - RH WG - PN 34802981981.....	20
SKID SHOE & BRKWY PRE-ASY - RH WG - PN 34802981980.....	22
BLANK PAGE 3.....	23
HYD MOTOR ASY - PN 33802974301A.....	24
DRIVE ASY - PN 30802992069.....	26
CUTTER BAR ASY - 6 FT RH WG - PN 34802974372.....	28
KNIFE BAR ASY - 6 FT RH WG - PN 34802974373.....	30
WELDMENT KIFE HEAD - PN 34802974349.....	31
HYD VALVE REMOTE CONTROL CABLES.....	32
HYD SCHEMATIC - SINGLE WG.....	34
WIRING HARNESS - SINGLE WG - PN 32002974318.....	36
HYD PUMP ASY - PN 33802974302B.....	37

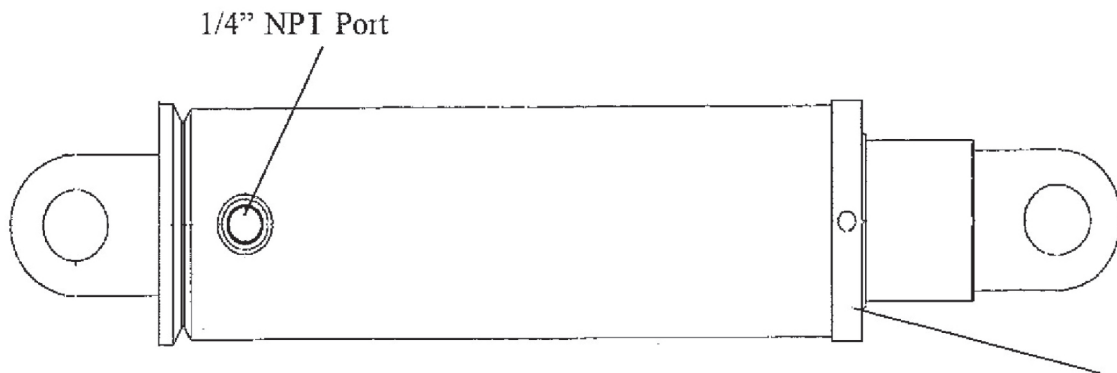
CARRIAGE ARM ASY - RH WG - PN 34802974362



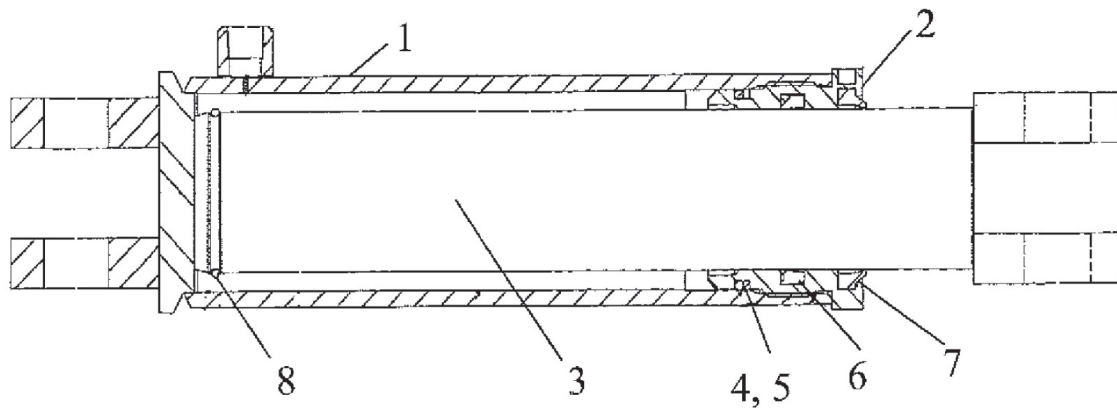
CARRIAGE ARM ASY - RH WG - PN 34802974362**Continued...**

ITEM	PART NO.	QTY.	DESCRIPTION
-----	34802974362	1	CARRIAGE ARM ASY
1	300000206	2	NO. 2 RED LUBRICAPS
2	30000752670	2	FITTING,GREASE STRAIGHT 1/4-28
3	30000755153	4	PIN,COTTER 3/16 X 1-1/2 PLATED
4	3000112700	2	CARRIAGE PIN
5	3000133400	2	PIN ROLL 3/8 X2-1/2
6	34002045200	6	ADP HYD ELBOW 4MP-4MJ90
8	34002965475	1	HOSE #4 - 4FJX - 4FJX - 18LG
9	34002970702	1	ADP HYD TEE 4MJ-4MJ-4FJX
10	30802974324	1	CARRIAGE ARM CASTING
11	30802974329	1	PIVOT MOUNT CASTING
12	3000424200	4	PIN CLEVIS 7/8 X2-3/4
14	3200693400A	1	CURB STOP CYLINDER
15	3200693500A	1	BAR LIFT CYLINDER

HYD CYL ASY - BAR TILT - PN 3380693500A

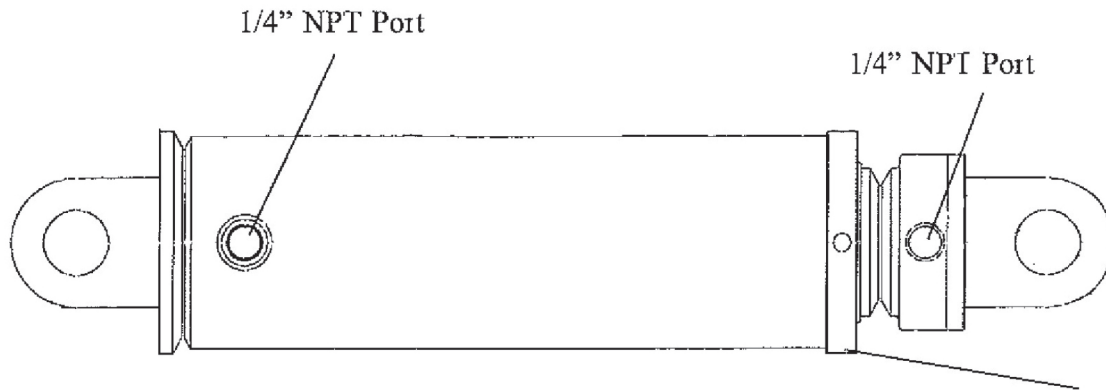


Apply a drop of Locktite 242 in 3 places 120° apart on the first two threads of the cylinder head

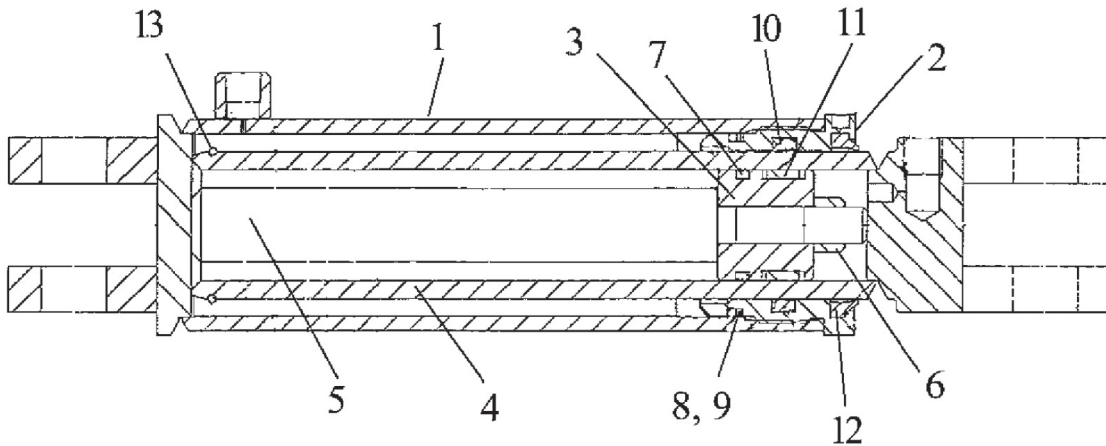


ITEM	PART NO.	QTY.	DESCRIPTION
----	3380693500A	1	BAR LIFT CYLINDER ASY.
1	33802977114	1	TUBE WLD'MT
2	33802977116	1	CYL HEAD
3	33802977115	1	ROD WLD'MT
4	----	1	* O-RING
5	----	1	* BACK-UP SEAL RING
6	----	1	* ROD SEAL
7	----	1	* ROD WIPER
8	----	1	* WIRE RING
9	33002977121	1	SEAL KIT, (* INCLUDES ITEMS 4, 5, 6, 7 & 8)

HYD CYL ASY - CURB LIFT - PN 3380693400A

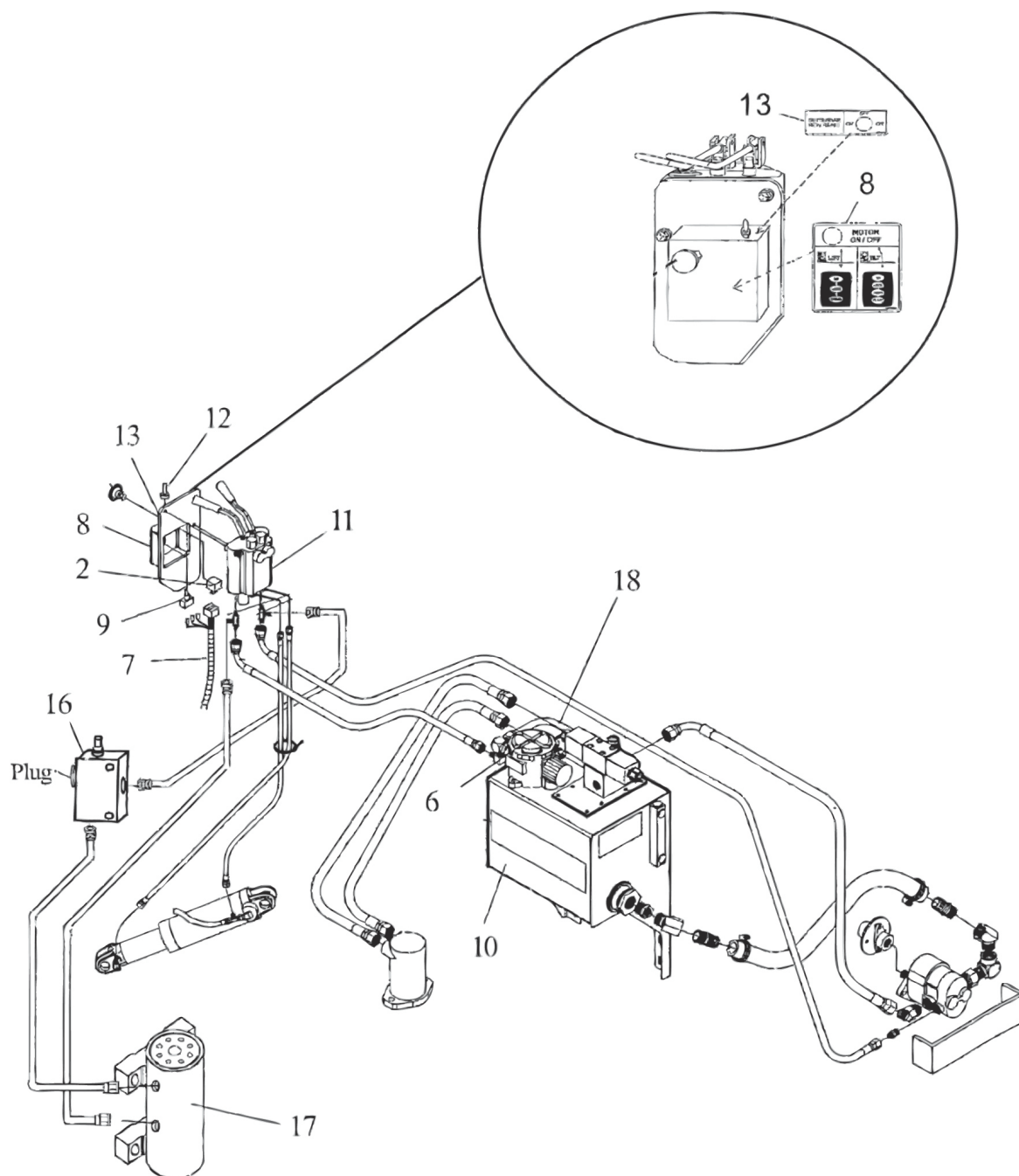


Apply a drop of Locktite 242 in 3 places 120° apart on the first two threads of the cylinder head



ITEM	PART NO.	QTY.	DESCRIPTION
----	3380693400A	1	CURB STOP CYLINDER ASY.
1	33802977114	1	TUBE WLD'MT
2	33802977116	1	CYLINDER HEAD
3	33802977118	1	PISTON
4	33802977122	1	ROD WLDMT
5	33802977123	1	CYLINDER ROD
6	30002716500	1	LOCKNUT
7	----	1	*PSP SEAL
8	----	1	*O-RING
9	----	1	*BACK-UP RING
10	----	1	*ROD SEAL
11	----	1	*NYLONG WEAR RING
12	----	1	*SNAP IN ROD SEAL
13	----	1	WIRE RING
14	30002977121	1	SEAL KIT, (* INCLUDES ITEMS 7, 8, 9, 10, 11, 12 & 13)

COMMON COMPONENT BOX - SINGLE WG - PN 30002981751



Note:

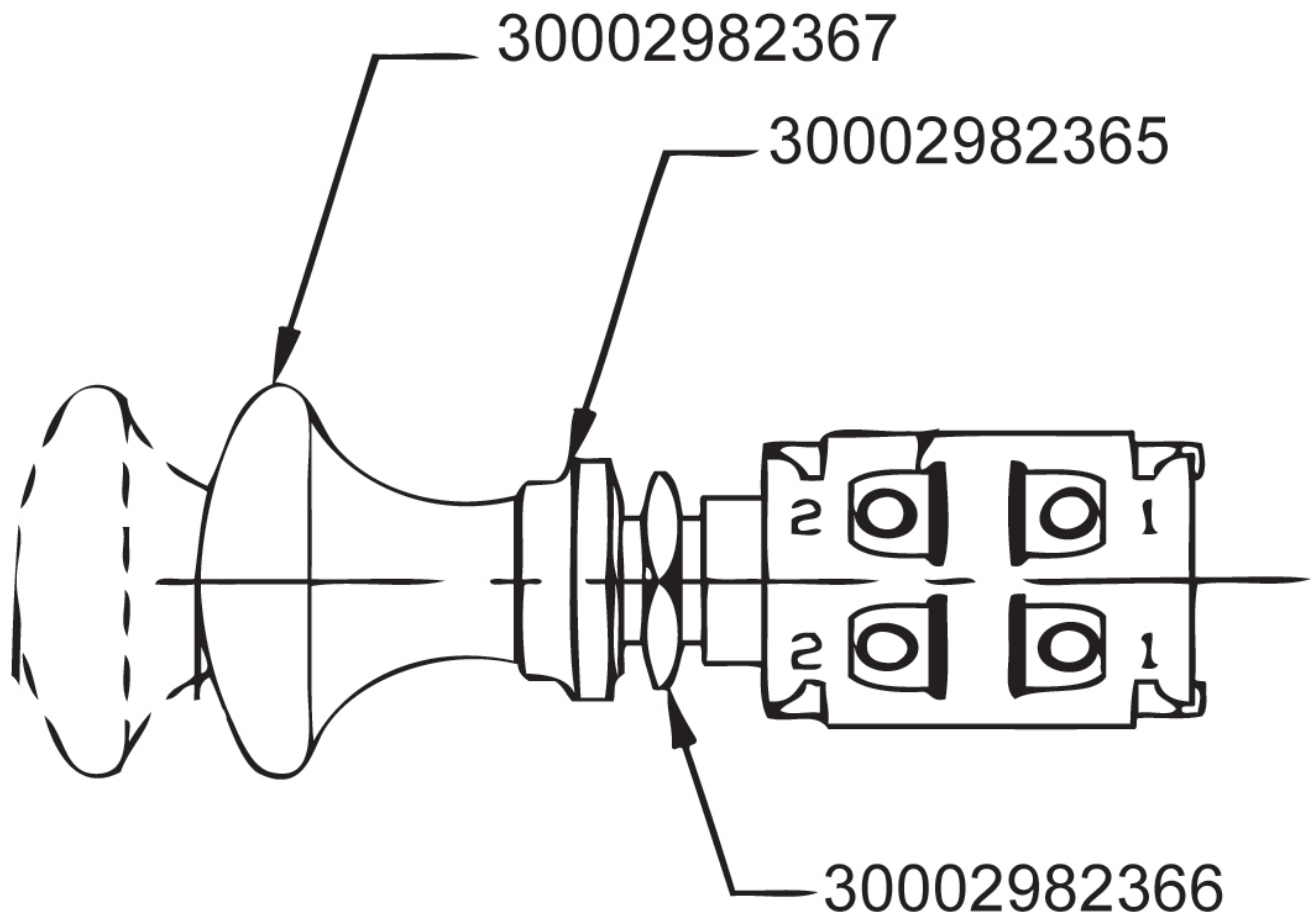
The hoses will vary with the model tractor used.

The Tank Assembly will include a short hose (item 18) which is the return hose from solenoid to the return filter, see tank assembly page for this hose.

COMMON COMPONENT BOX - SINGLE WG - PN 30002981751**Continued...**

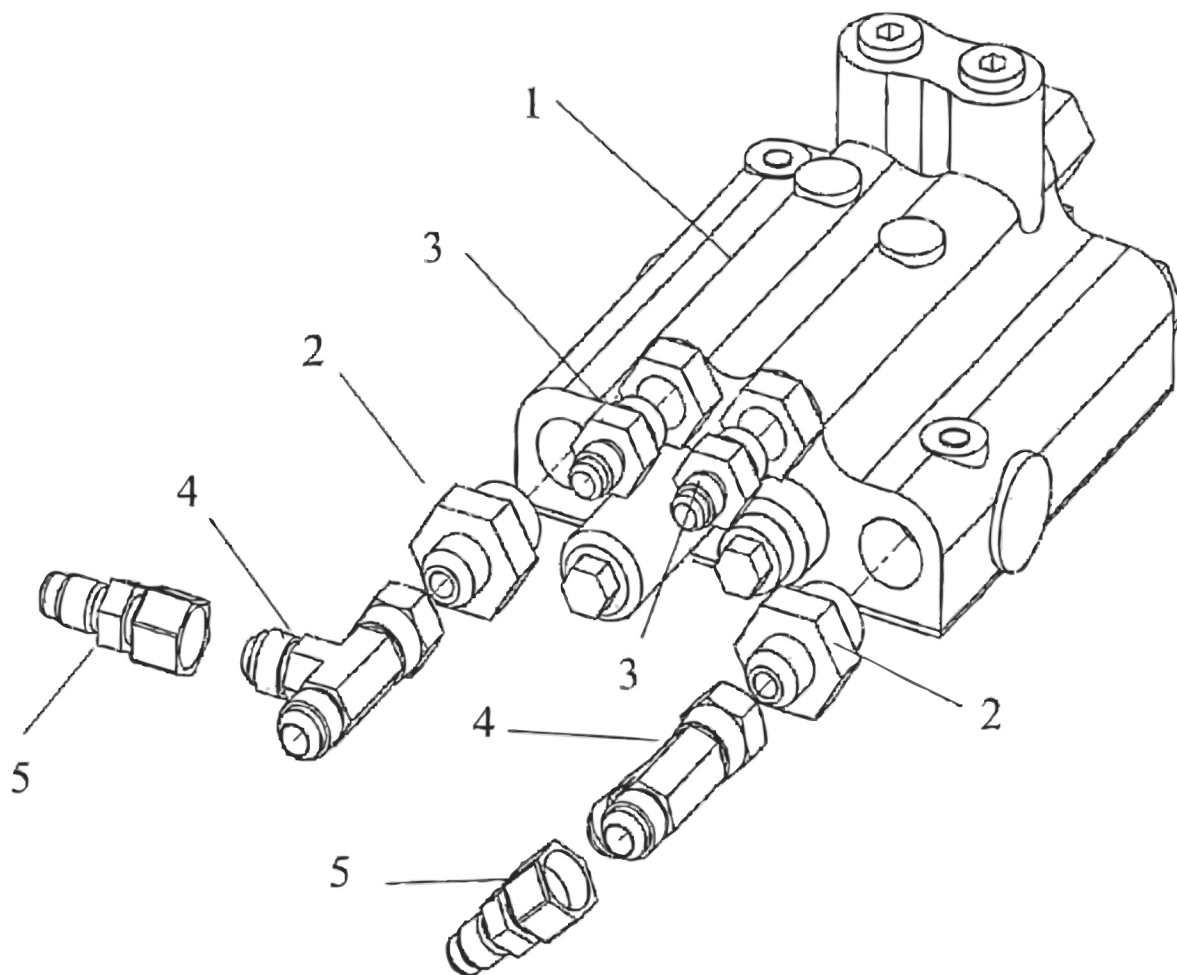
ITEM	PART NO.	QTY.	DESCRIPTION
-----	30002981751	1	COMMON COMPONENT BOX RH SINGLE WING
2	32002964028	1	PUSH PULL SWITCH
	32002964028	1	PUSH PULL SWITCH (W/ ITEM # 3)
6	33002974310	1	FILTER ELEMENT
7	32002974318	1	WIRE HARNESS
8	30002974321	1	DECAL, VALVE & SWITCH OPERATION
9	32002974322	1	3 - POSITION TOGGLE SWITCH
10	-----	1	HYDRAULIC TANK ASY. (INCLUDES ITEM # 18, VARIES WITH TRACTOR)
11	32802982077	1	VALVE ASY. 2 SPOOL W/ FITTINGS
12	32802974962	1	TOGGLE SWITCH BOOT COVER
13	30002975270	1	DECAL, REVERSING SWITCH INSTRUCTION
16	33002982296	1	BREAK-A-WAY VALVE KIT
17	34802981979	1	ROTOR ACTUATOR (INCLUDED WITH BASE UNIT)
18	33002974320	1	HOSE, # 8 - 14" LG

SWITCH KNOB PN 30002982367

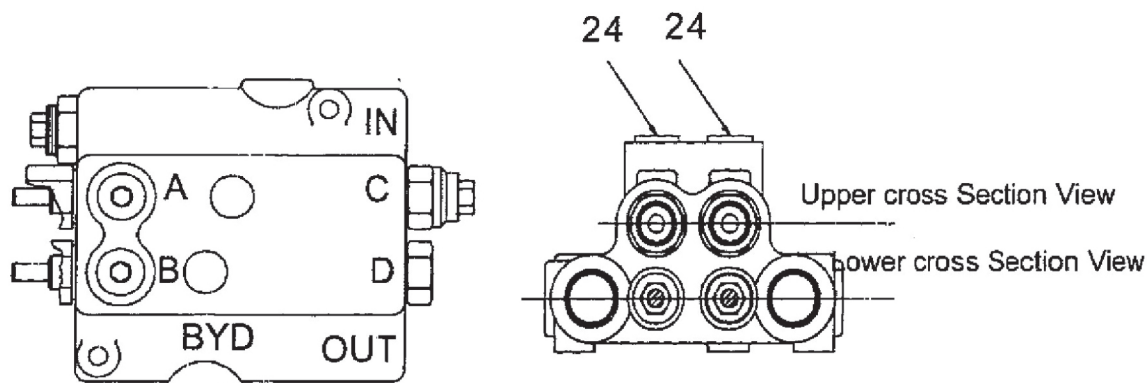
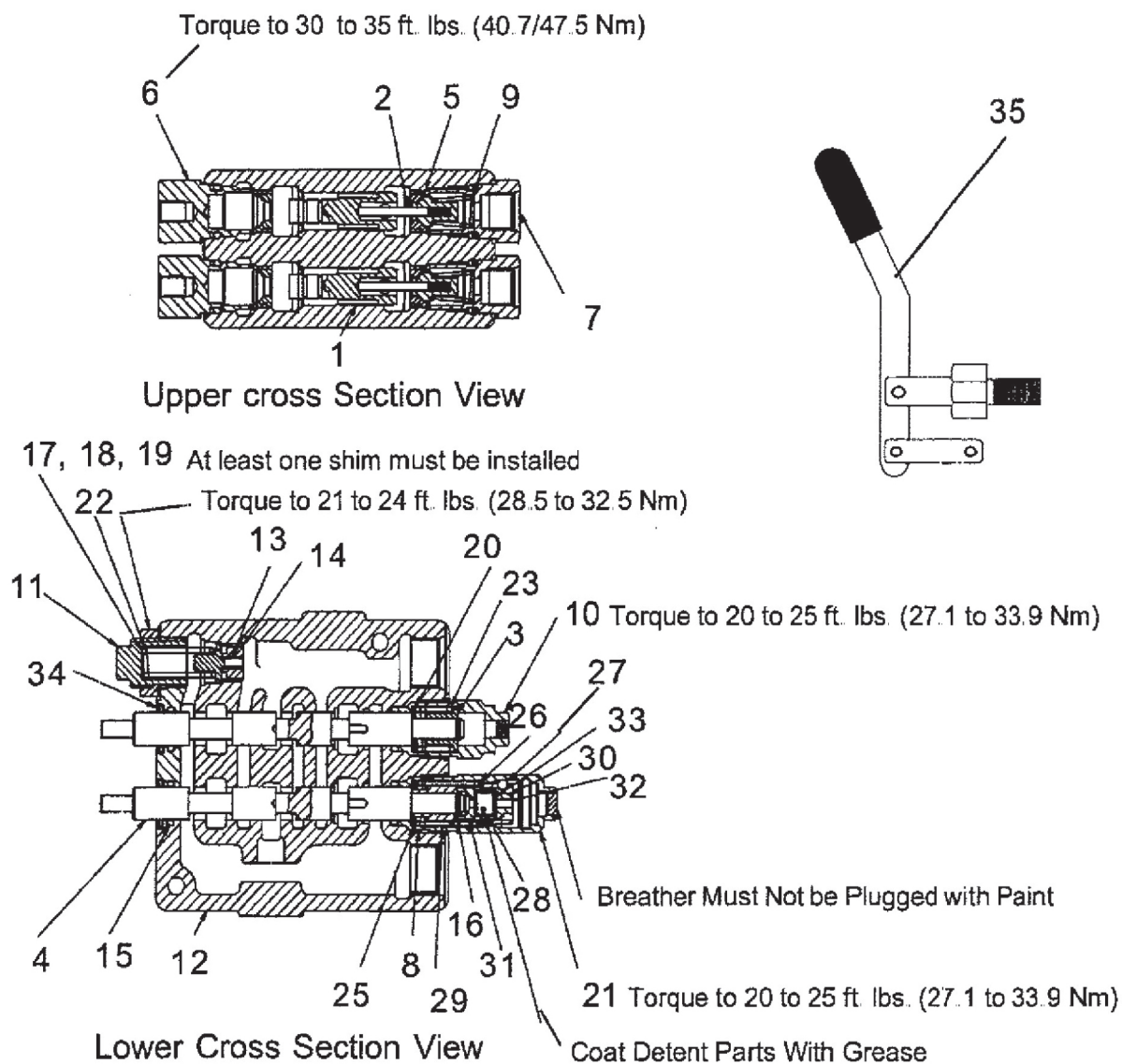


ITEM	PART NO.	QTY.	DESCRIPTION
1	30002982367	1	SWITCH KNOB
2	30002982367	1	FACE NUT
3	30002982366	1	JAM NUT

HYD VALVE ASY W-FITTINGS - PN 33802982077



ITEM	PART NO.	QTY.	DESCRIPTION
----	33802982077	1	VALVE ASY, W/ FITTINGS (2-SPOOL)
1	33802974306	1	VALVE, DIRECTIONAL CONTROL
2	33002968850	2	HYD ADAPTER, STRAIGHT
3	33003200284	2	HYD ADAPTER, STRAIGHT
4	33002965166	2	HYD, TEE ADAPTER
5	33002981896	2	HYD ADAPTER

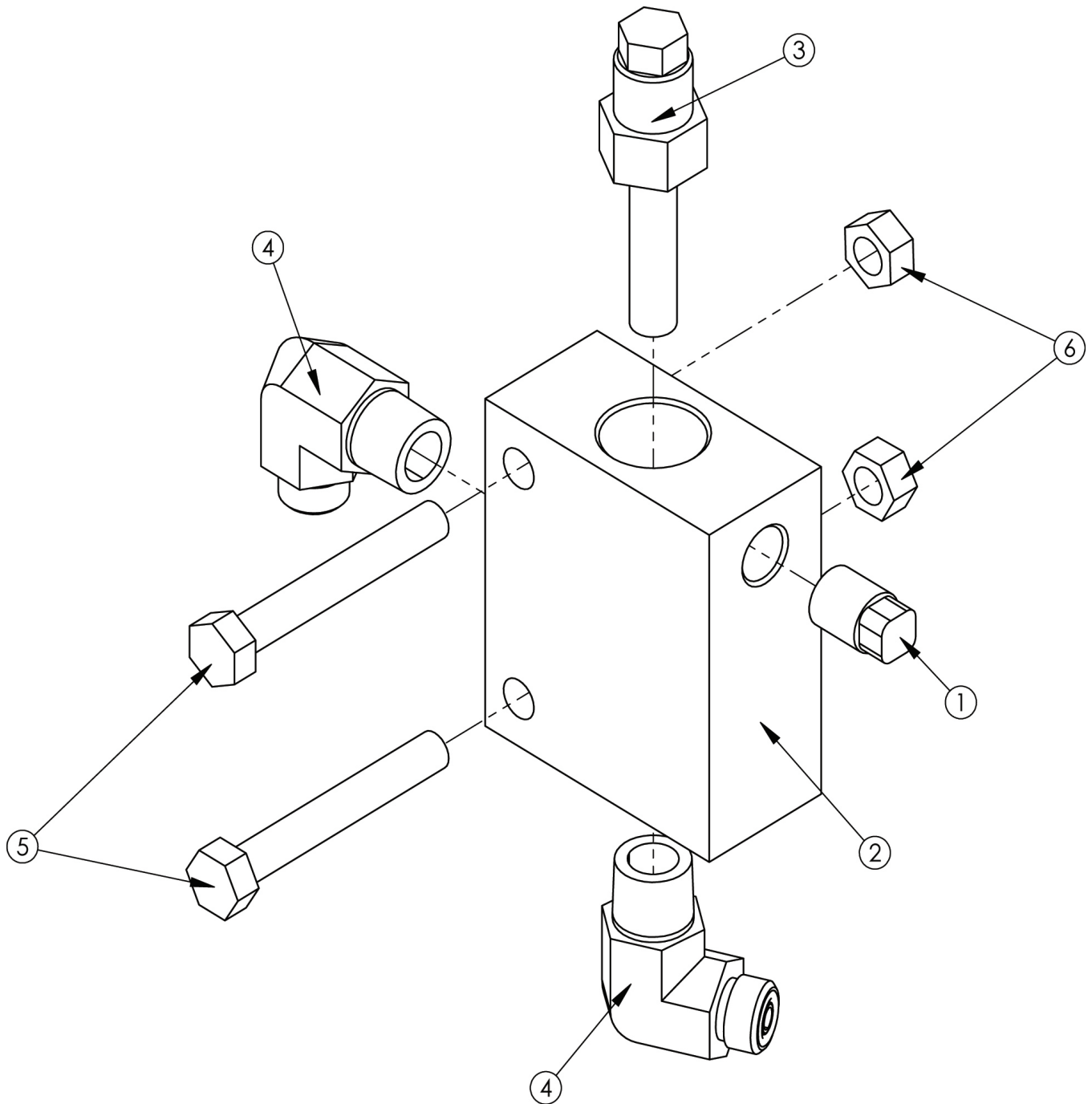


HYD VALVE ASY W-O FITTINGS PN 33802974306

Continued...

ITEM	PART NO.	QTY.	DESCRIPTION
-----	33802974306	1	VALVE ASY, 2 SPOOL W/O FITTINGS
1	33002976934	2	UNLOAD PLUNGER
2	33002966645	2	POPPET ASY.
3	30002966646	1	SPACER
4	33002976933	2	SPOOL
5	30002966648	4	SEAT ASY.
6	33002966649	2	PLUG ASY.
7	33002966650	2	PLUG ASY.
8	30002966651	2	BUSHING
9	30002966652	2	LOCKOUT SPRING
10	30002966653	1	CAP ASY.
11	33002966654	1	PLUG ASY.
12	33802976932	1	BODY
13	33002976931	1	POPPET
14	30002976930	1	SEAT
15	30002966657	4	O-RING
16	30002966658	2	RETAINING RING
17	30002966659	1	WASHER
18	30002966660	1	WASHER
19	30002966661	1	WASHER
20	30002966662	1	WASHER
21	30002976946	1	CAP ASY
22	30002976945	1	SPRING
23	30002966669	1	SPRING
24	33002976944	2	PLUG ASY
25	30002976943	1	WASHER
26	30002976942	1	WASHER
27	33002976941	3	BALL
28	30002976940	1	SPRING
29	30002976939	1	SPRING
30	33002976938	1	CONE
31	30002976937	1	SPACER
32	33002976936	1	ADAPTER CAP
33	30002976935	1	WASHER
34	33002966671	2	WIPER SEAL
35	33002976957	2	HANDLE KIT
-----	33002970427	1	SEAL KIT

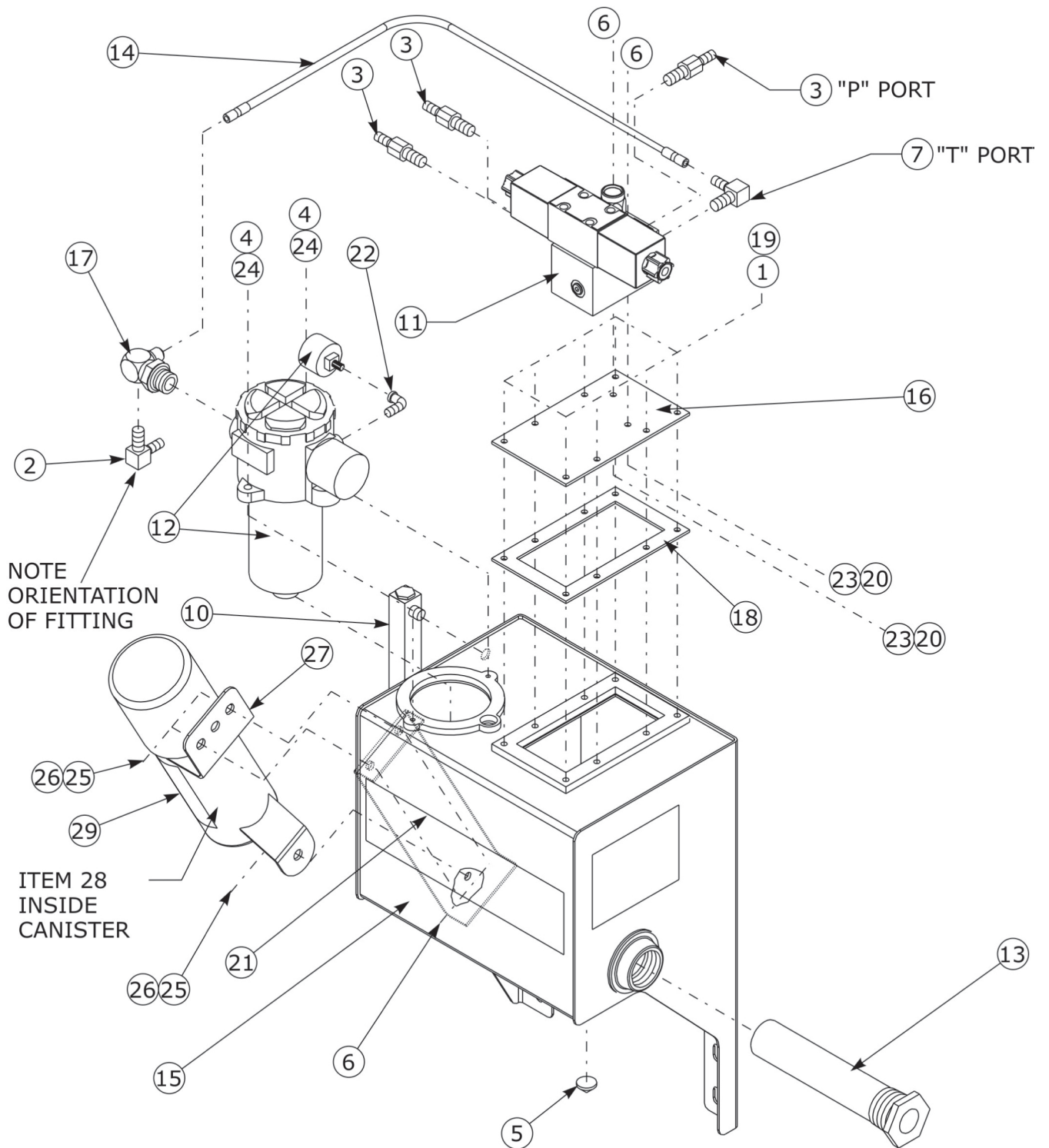
BREAKAWAY VALVE KIT PN 32002982296



ITEM	PART NO.	QTY.	DESCRIPTION
1	30000751003	1	PIPE PLUG 1/4"
2	32002965521	1	VALVE BODY
3	32002982478	1	CATRIDGE RELIEF SET 1550 PSI
4	33002823100	2	ADAPTER, HYD ELBOW
5	30000750925	2	BOLT, HHCS 5/16" X 2-1/4" LG
6	30000750940	2	NUT, TOPLOCK 5/16 NC PL B

THIS PAGE INTENTIONALLY LEFT BLANK

HYD TANK ASY



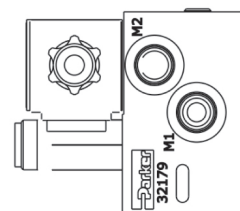
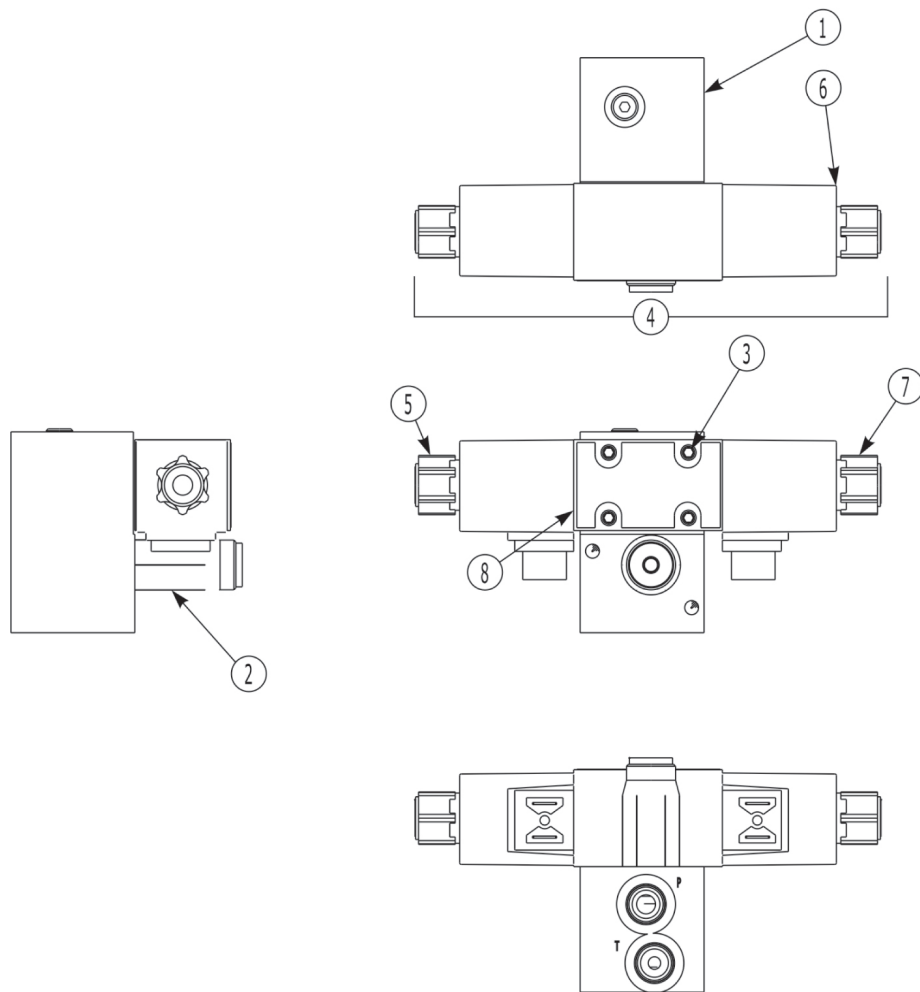
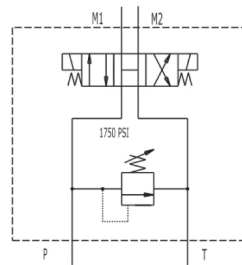
HYD TANK ASY

Continued...

ITEM	PART NO.	QTY.	DESCRIPTION
----	----	1	ASSEMBLY HYDRAULIC TANK
1	30000017000	8	LOCKWASHER 1/4 PL STD
2	330001891	1	ADP HYD ELBOW 4MP-6MJ90
3	33000696800	3	ADP HYD STGHT 8MJ-8MB
4	30010119000	2	HHCS 5/16 NC 1PL5
5	3080117100	1	MAGNETIC DRAIN PLUG
6	30002959924	5	NUT TOPLOCK 1/4 NC PLB
7	33002962213	1	ADY HYD ELBOW 8MB-8MJ 90
10	30002968880	1	GAUGE SIGHT TEMPERATURE
11	33802988789	1	VALVE SOLENOID CONTROL
12	33802974309	1	FILTER HOUSING W/ FILTER GUAGE
13	33002974312	1	SUCTION STRAINER
14	33002974320	1	HOSE #8-8FJX-8FJX-15LG"
15	----	1	WELDMENT HYDRAULIC TANK (VARIES WITH TRACTOR)
16	33802974369	1	COVER TANK ACCESS
17	33002974370	1	ADP HYD ELBOW SPCL 8MJ-12MB 90 W/4FP
18	330064600D	1	COVER GASKET
19	30000002100	8	HHCS 1/4 NC 1/2 PL5
20	30010074000	2	HHCS 1/4 NC 3 PL5
21	30002993671	1	DECAL, LOGO, KSB6
22	330000752	1	ELBOW 2MP-2FP 90
23	30002976123	2	SEAL WASHER 1/4
24	30000011700	2	5/16 LOCKWASHER
25	30000024100	3	1/4 FLATWASHER
26	30010058000	3	HHCS 1/4 NC 1 PL5
27	30000776031	1	CANISTER, PARTS MANUAL
28	30002993751C	1	MANUAL OPERATORS (NOT SHOWN)

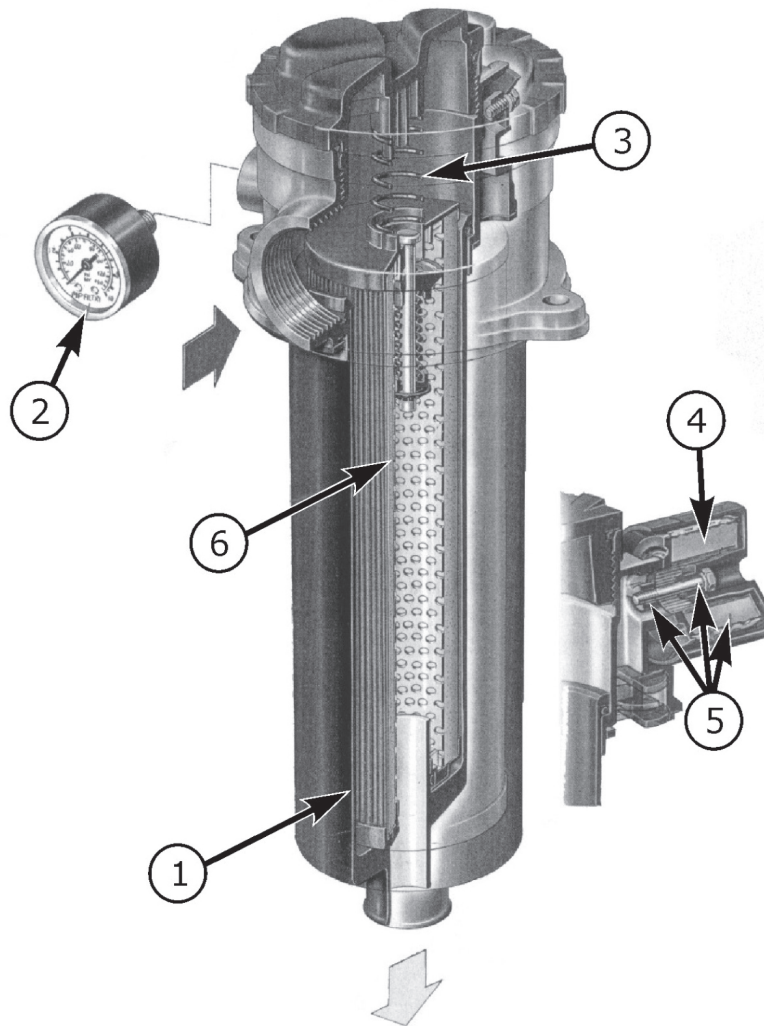
HYD VALVE SOLENOID ASY - PN 33002988789

SCHEMATIC



ITEM	PART NO.	QTY.	DESCRIPTION
----	33002988789	1	VALVE SOLENOID ASY.
1	33002979345	1	BODY
2	33002979346	1	RELIEF CARTRIDGE
3	30002979190	1	BOLT KIT
4	33002989041	1	*SOLENOID ASY.
5	33002988802	1	STEM TUBE ASY.
6	33002988803	1	COIL SOLENOID
7	30002988804	1	COIL NUT
----	----	1	CONSISTS OF REPLACEMENT PARTS; STEM TUBE,COIL SOLENOID,COIL NUT
	33002988805	1	SEAL KIT (NOT SHOWN)
	33002979191	1	SEAL KIT/RELIEF CARTRIDGE (NOT SHOWN)

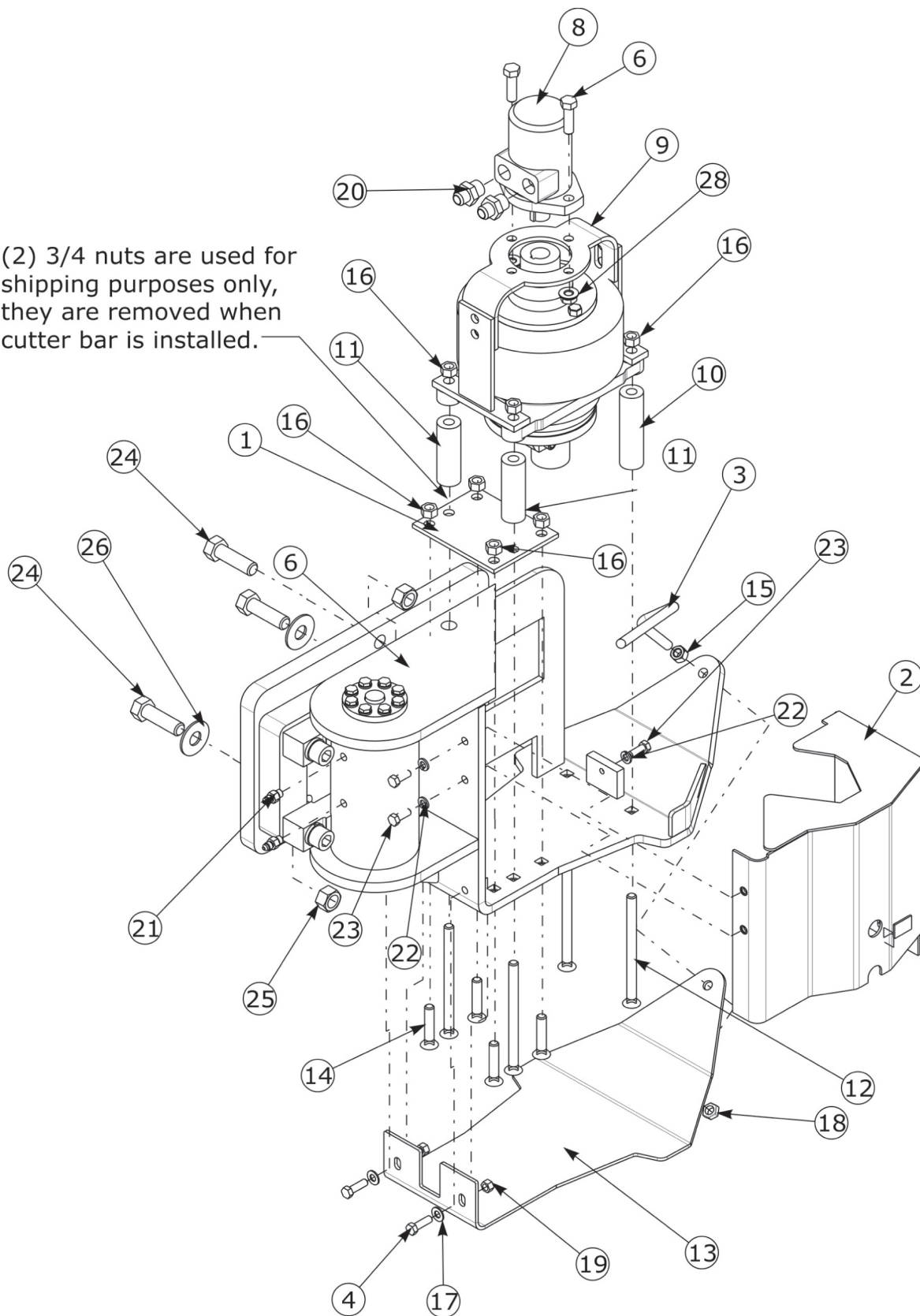
HYD FILTER ASY - PN 33802974309



ITEM	PART NO.	QTY.	DESCRIPTION
1	33002976906	1	BOWL
2	33002976907	1	FILTER CONDITION GAUGE
3	33002976908	1	FILTER RETAINER SPRING
4	33002974319	1	AIR BREATHER ELEMENT
5	33002976909	1	AIR BREATHER KIT
6	33002974310	1	FILTER ELEMENT
7	33002976910	1	SEAL KIT

SKID SHOE & ACTUATOR - RH WG - PN 34802981981

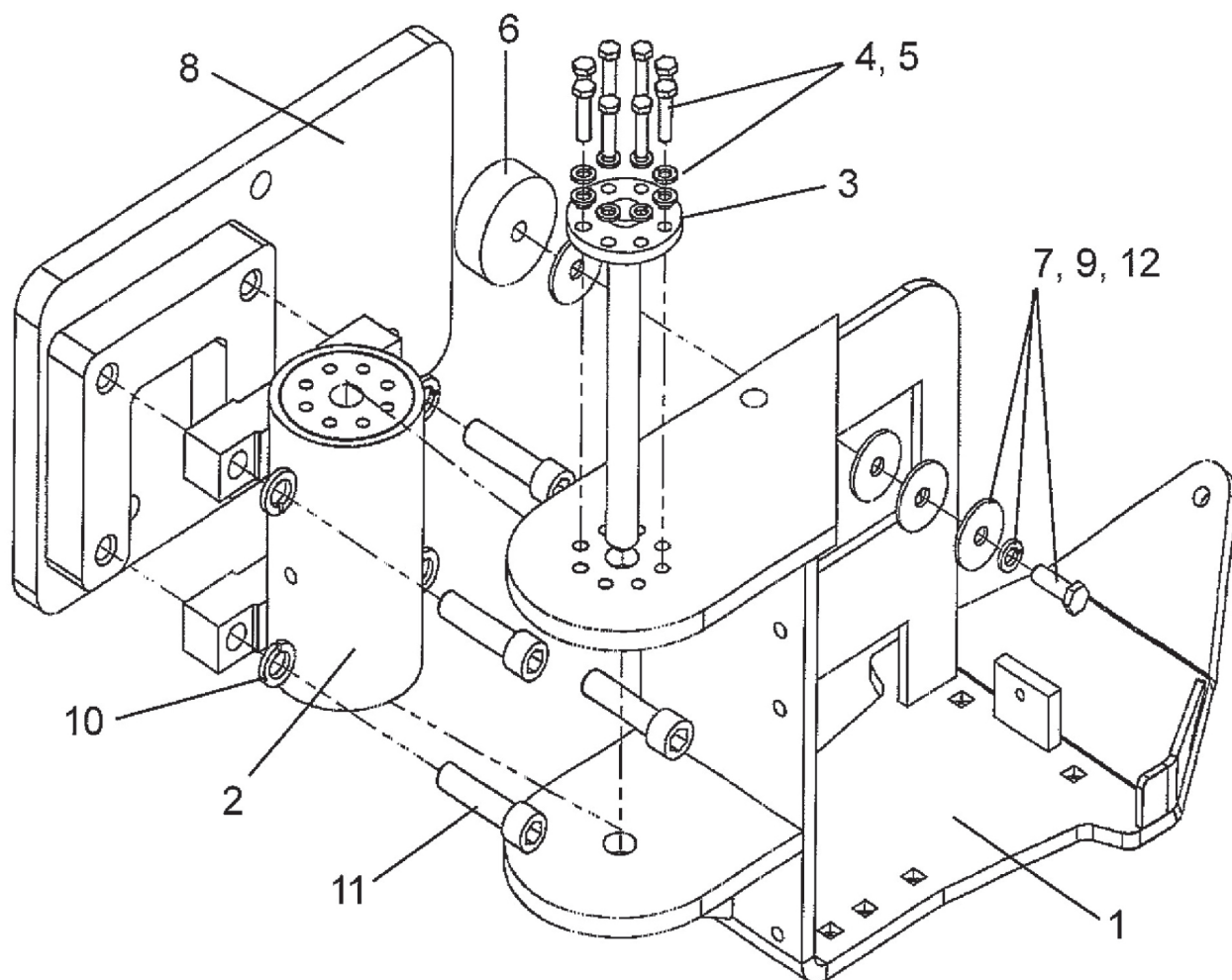
(2) 3/4 nuts are used for shipping purposes only, they are removed when cutter bar is installed.



SKID SHOE & ACTUATOR - RH WG - PN 34802981981**Continued...**

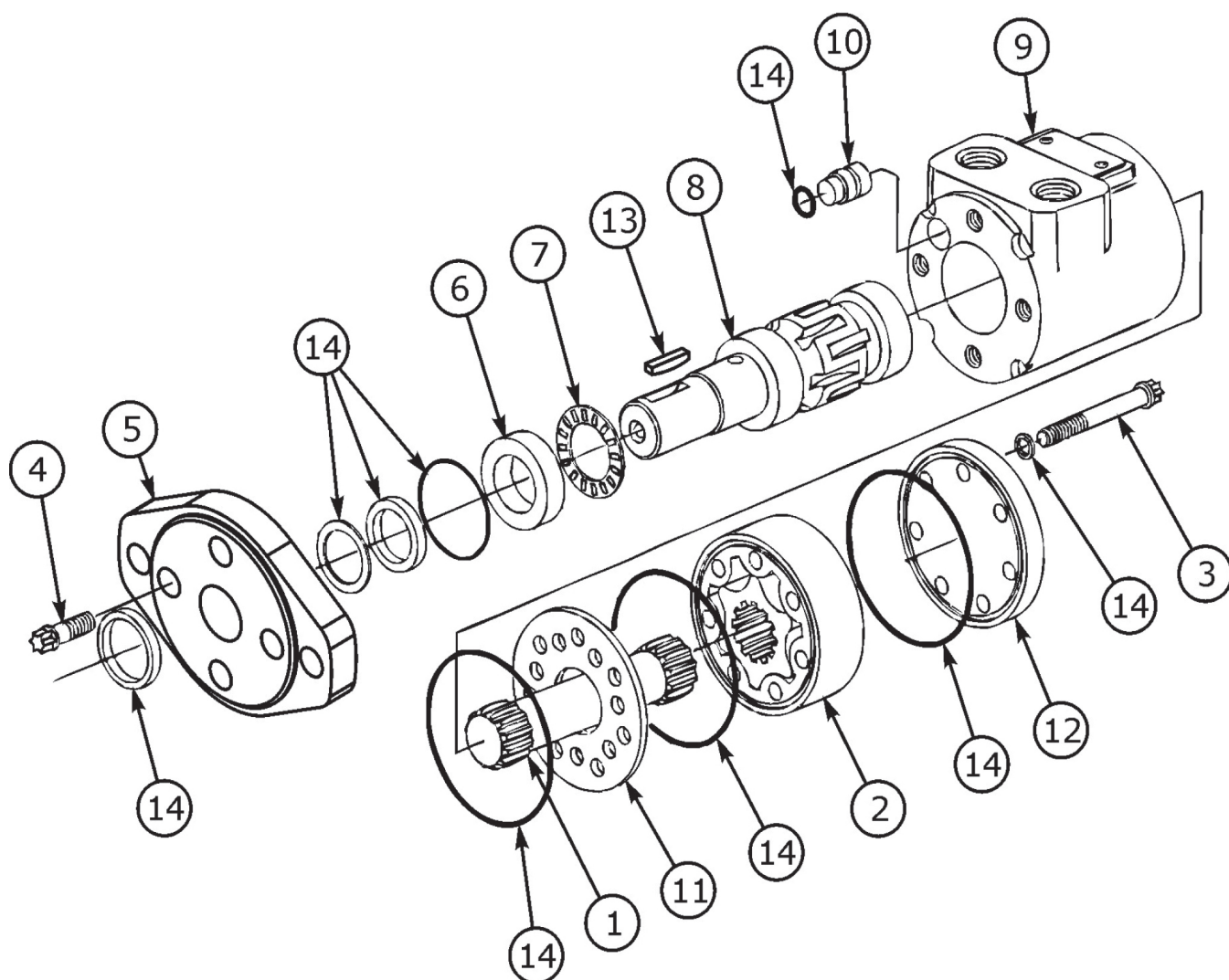
ITEM	PART NO.	QTY.	DESCRIPTION
-----	34802981981	2	ASY RH SHOE DRV ACTUATOR BRKWY
1	34802974354	1	SPACER CUTTER BAR
2	34802981984	1	WLDMNT, COVER MOTOR
3	34802974358	1	ROD DEFLECTOR
4	30000753642	2	HHCS 3/8 NC 1-1/4 PL5
5	30000749130	2	HHCS 1/2 -13UNC 1 3/4 PL5
6	34802981980	1	PRE-ASY , SKIDSHOE & ACTUATOR
7	32802992069	1	ASY HORIZONTAL KNIFE DRIVE
8	32802974301A	1	MOTOR, GEROTOR
9	34802974313	1	BRACKET HYD. MOTOR ADAPTER
10	33002974342	2	TUBE 1 1/4 ODX 9/16 ID X 4 5/8
11	33002974343	2	TUBE 1 1/4 OD X 9/16 X 3 3/4
12	30002976854	4	PLOW BOLT #3 1/2 NC 7 PL8
13	34802981959	1	SHOE BOTTOM
14	30002976853	4	PLOW BOLT #3 1/2 NC 7 PL8
15	30000001200	1	NUT HEX 1/2 NC
16	30000001800	8	LOCKNUT TLM 1/2 NC PLC
17	30000011100	2	FLATWASHER 3/8 STD
18	3005C8130	1	HEXNUT 1/2 JAM
19	30000015800	2	LOCKNUT TLM 3/8 NC PLC
20	33002042300	2	ADP, HYD ST 10MB - 8MJ
21	33002962181	2	ADP HYD STGHT 4MB-4MJ
22	30000012101	3	LOCKWASHER, 3/8" PL
23	30000011400	3	BOLT, HHCS 3/8 NC 1 PL5
24	30000037100	3	HHCS 3/4 NC 2-1/2 PL5
25	30000037200	3	NUT 3/4 NC LOCKNUT
28	30002988071	2	FLANGE NUT, 1/2"-13 NC

SKID SHOE & BRKWY PRE-ASY - RH WG - PN 34802981980



ITEM	PART NO.	QTY.	DESCRIPTION
----	34802981980	1	SKID SHOE & BREAK-A-WAY PRE-ASY, RH
1	34802981960	1	SKID SHOE WLD'MT, RH
2	32802981979	1	ROTOR ACTUATOR
3	34802981955	1	BREAK-A-WAY PIN WLD'MT
4	30000012101	8	LOCKWASHER
5	30002977955	8	BOLT
6	34003200250	1	RUBBER BUMPER PAD
7	30002974363	4	WASHER
8	34802981976	1	BACK PIVOT PLATE, TAPPED
9	30000019600	1	LOCKWASHER
10	30002972570	4	LOCKWASHER
11	30002961298	4	BOLT
12	30000019300	1	BOLT

HYD MOTOR ASY - PN 33802974301A



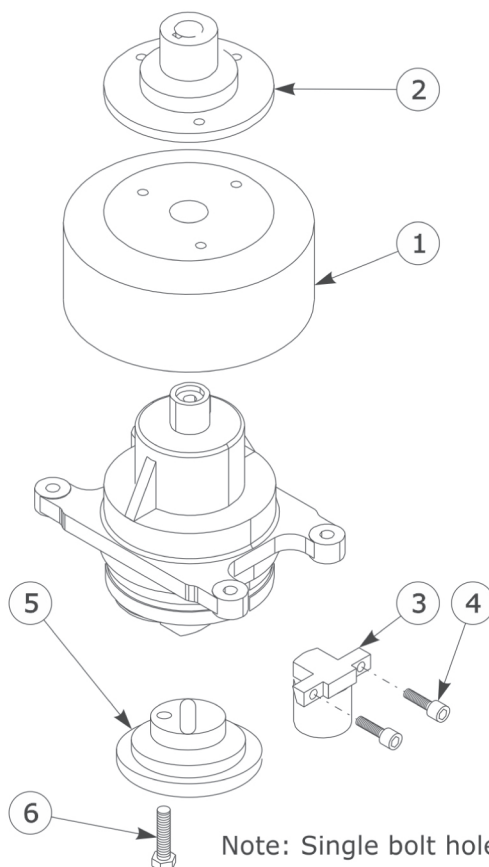
ITEM	PART NO.	QTY.	DESCRIPTION
-----	33802974301A	1	HORIZONTAL KNIFE DRIVE ASY (W/ 1/4)
1	33002976883	1	INTERNAL DRIVE SHAFT
2	33002976884	1	STAR & HOUSING SET
3	33002976885	7	HOUSING TIE SCREW
4	33002976886	4	FLANGE ATTACHMENT SCREW
5	33002976887	1	FLANGE MOUNT
6	33002976888	1	THRUST BEARING RACE
7	33002976889	1	THRUST BEARING
8	33002976890A	1	OUTPUT SHAFT, (W/ 1/4)
9	33002976891	1	MOTOR HOUSING
10	30002976892	1	PLUG
11	33002976893	1	SPACER PLATE
12	30002976894	1	END CAP

HYD MOTOR ASY - PN 33802974301A

Continued...

ITEM	PART NO.	QTY.	DESCRIPTION
13	33002765400	1	KEY, 1/4
14	30002976895	1	SEAL KIT, GEROTOR MOTOR

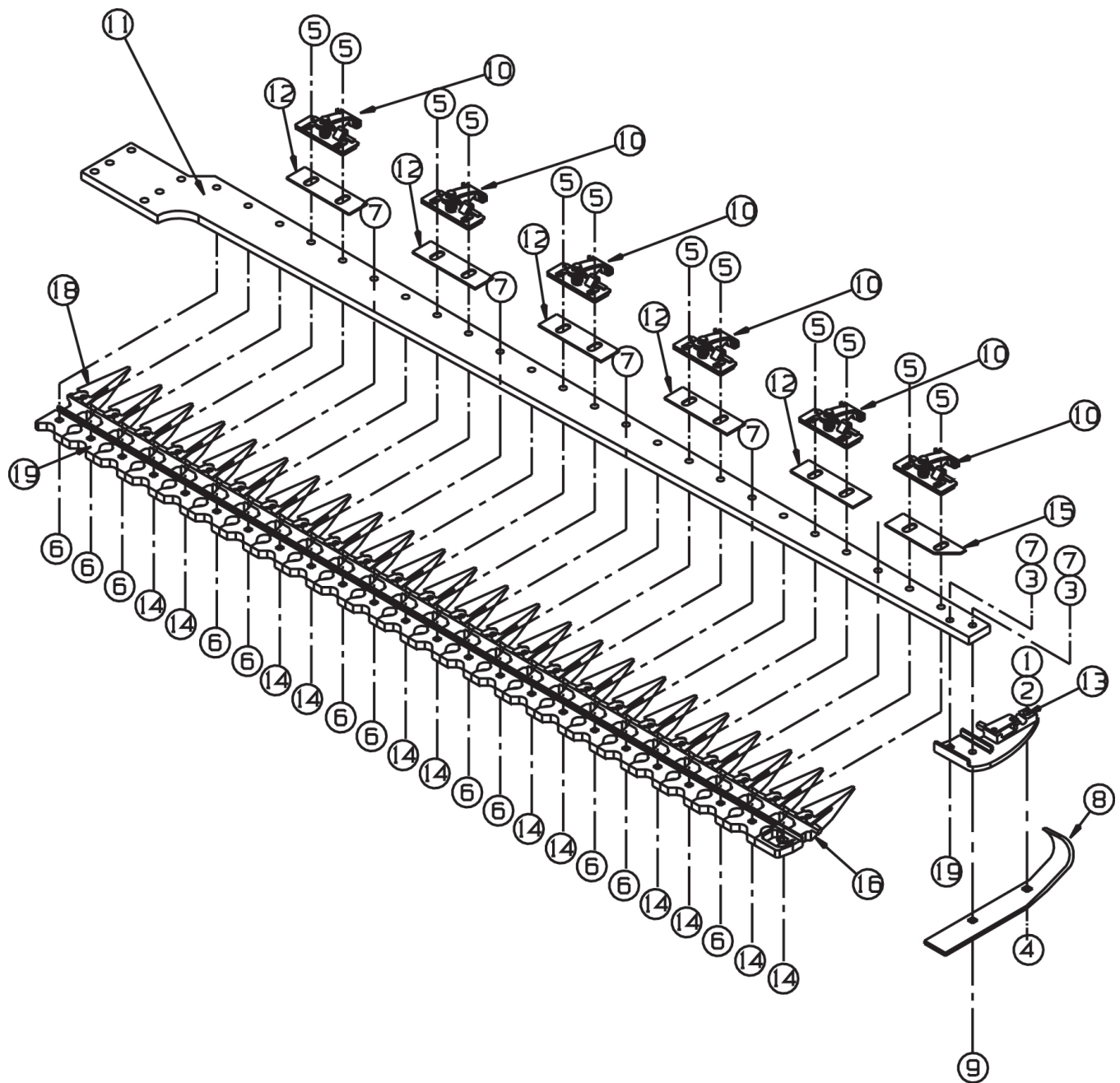
DRIVE ASY - PN 30802992069



ITEM	PART NO.	QTY.	DESCRIPTION
-----	30802992069	1	DRIVE ASY,HORIZ KNIFE SUPPORT
1	30802992084	1	FLYWHEEL, HORIZ KNF DRV
2	30002974315A	1	ADAPTER HUB 1"ID X 1/4" KEYWAY
3	30002974317	1	STUD KNIFE DRIVE BEARING
4	30002977820	2	SHCS 10-P1.50 X 35MM PL8.8
5	30802992070	1	CRANKSHAFT,HORIZ KNIFE SUPPORT
6	30002967570	1	BOLT HEX 8MM X 1.25 X 35MM

THIS PAGE INTENTIONALLY LEFT BLANK

CUTTER BAR ASY - 6 FT RH WG - PN 34802974372

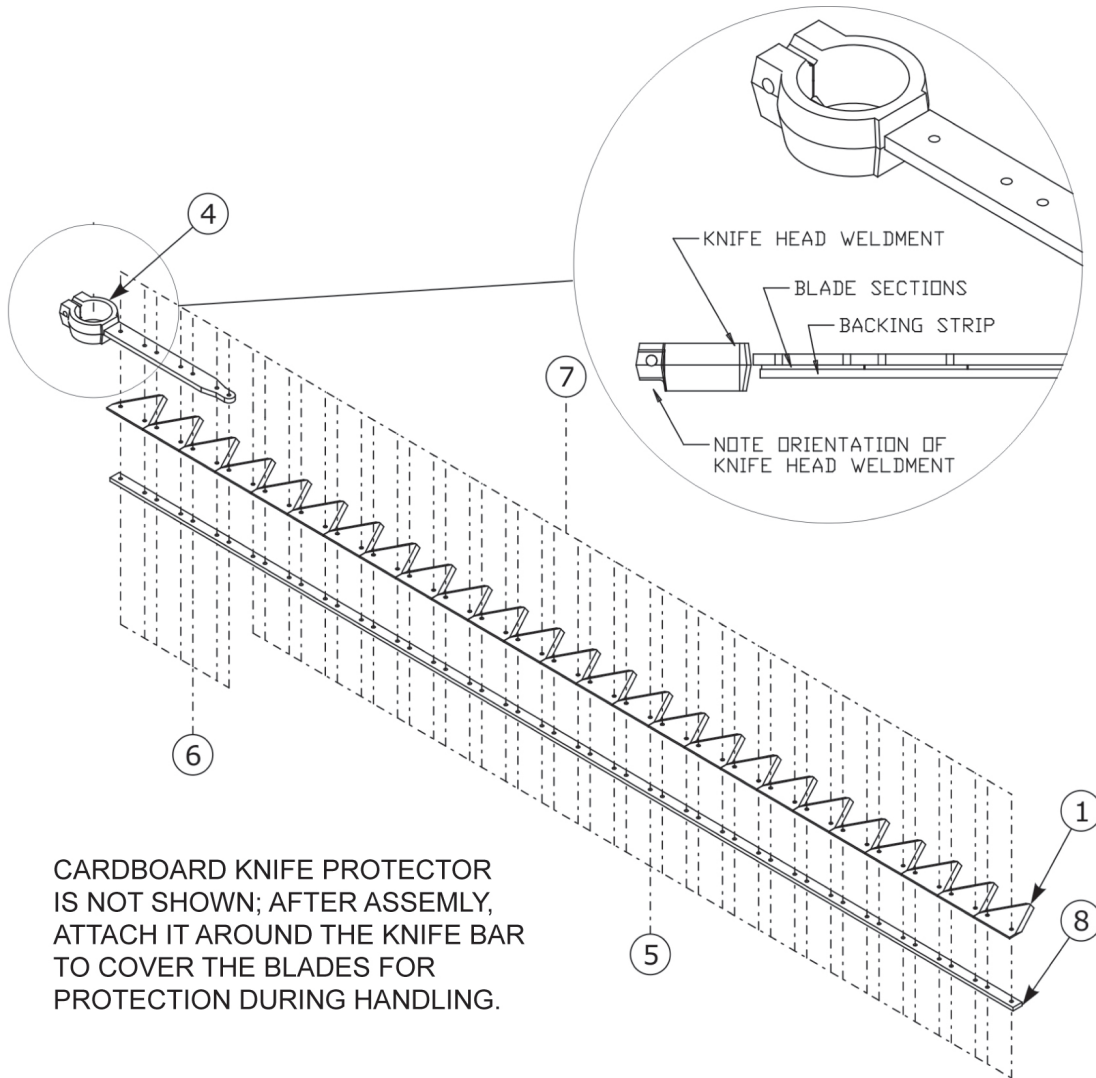


ITEM	PART NO.	QTY.	DESCRIPTION
----	34802974372	1	6 FT CUTTER BAR ASY. RH WING
1	30000001200	1	NUT 1/2 NC HEX PL
2	30000019600	1	LOCKWASHER, 1/2, HVY, PL
3	30000022200	2	HIGH ALLOY, L/W 7/16 YZ
4	300000516	1	CARB 1/2 NC 1-3/4
5	3004527	12	NUT, LOCK, FLG WHIZ 7/16-14NC PL
6	300004600	12	7/16-14 x 1 1/2 #3 PLOW BOLT

CUTTER BAR ASY - 6 FT RH WG - PN 34802974372**Continued...**

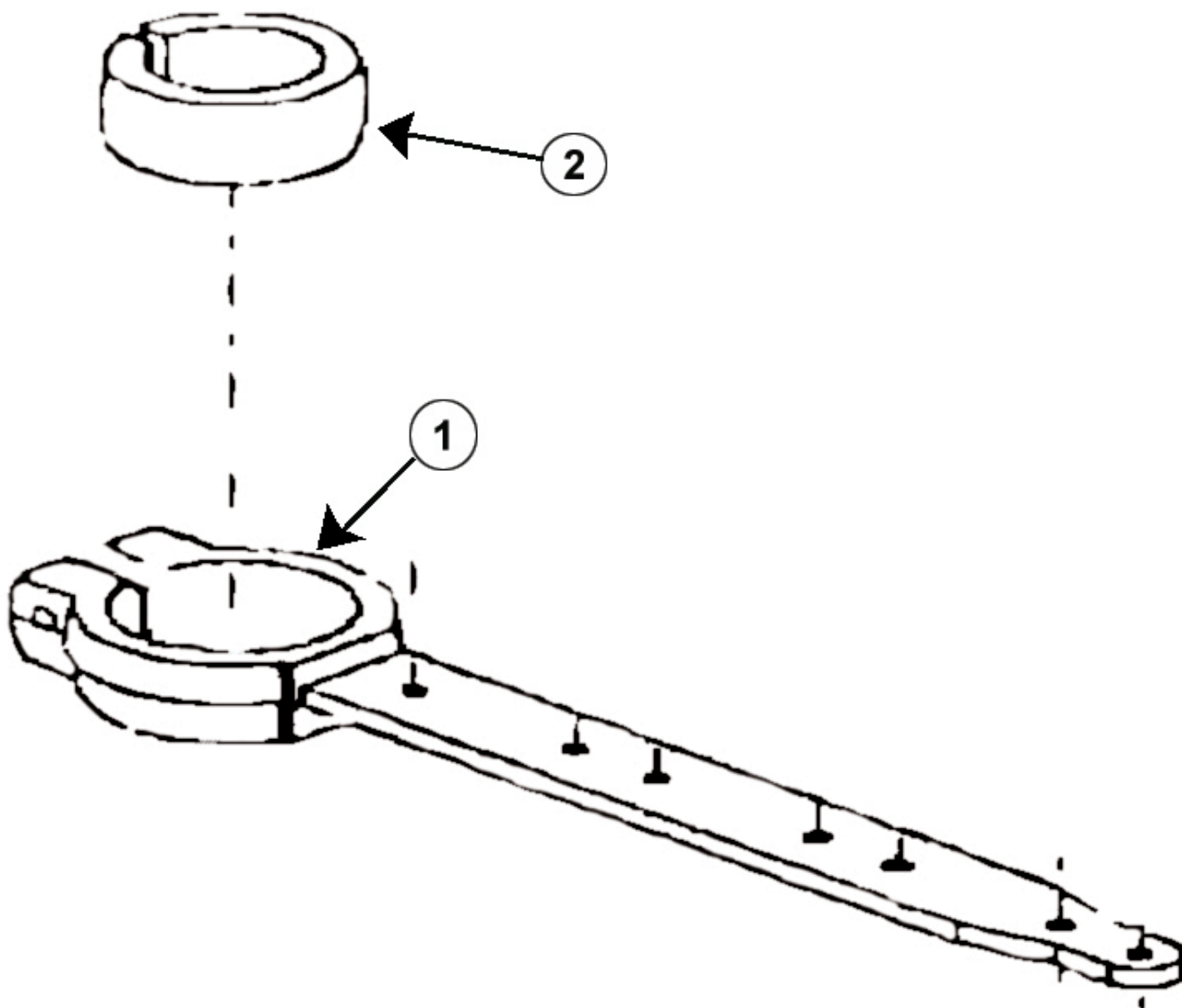
ITEM	PART NO.	QTY.	DESCRIPTION
7	30000999316	14	NUT 7/16 NC HEX PLATED
8	3480123800	1	OUTER SHOE SOLE, R.H.
9	3000129000	1	7/16 - 14 x 1 3/4 CARRIAGE BOLT
10	34802983841	6	LOW ARCH HOLD DOWN CLIP
11	34802974346	1	CUTTERBAR, 6 FT
12	3480532600	5	PLATE, KNIFE WEAR
13	3480570900	1	OUTER SHOE ASSEMBLY
14	3000571800	12	7/16 -14 X 2 #3 PLOW BOLT, GR.
15	3480571900	1	WEAR PLATE
16	3480593600	1	OUTER ROCK GUARD
17	3480593700	22	CENTER ROCK GUARD
18	3480593800	1	INNER ROCK GUARD
19	30012666000	1	CARR 7/16 -14 UNC 1 1/2 PL5

KNIFE BAR ASY - 6 FT RH WG - PN 34802974373



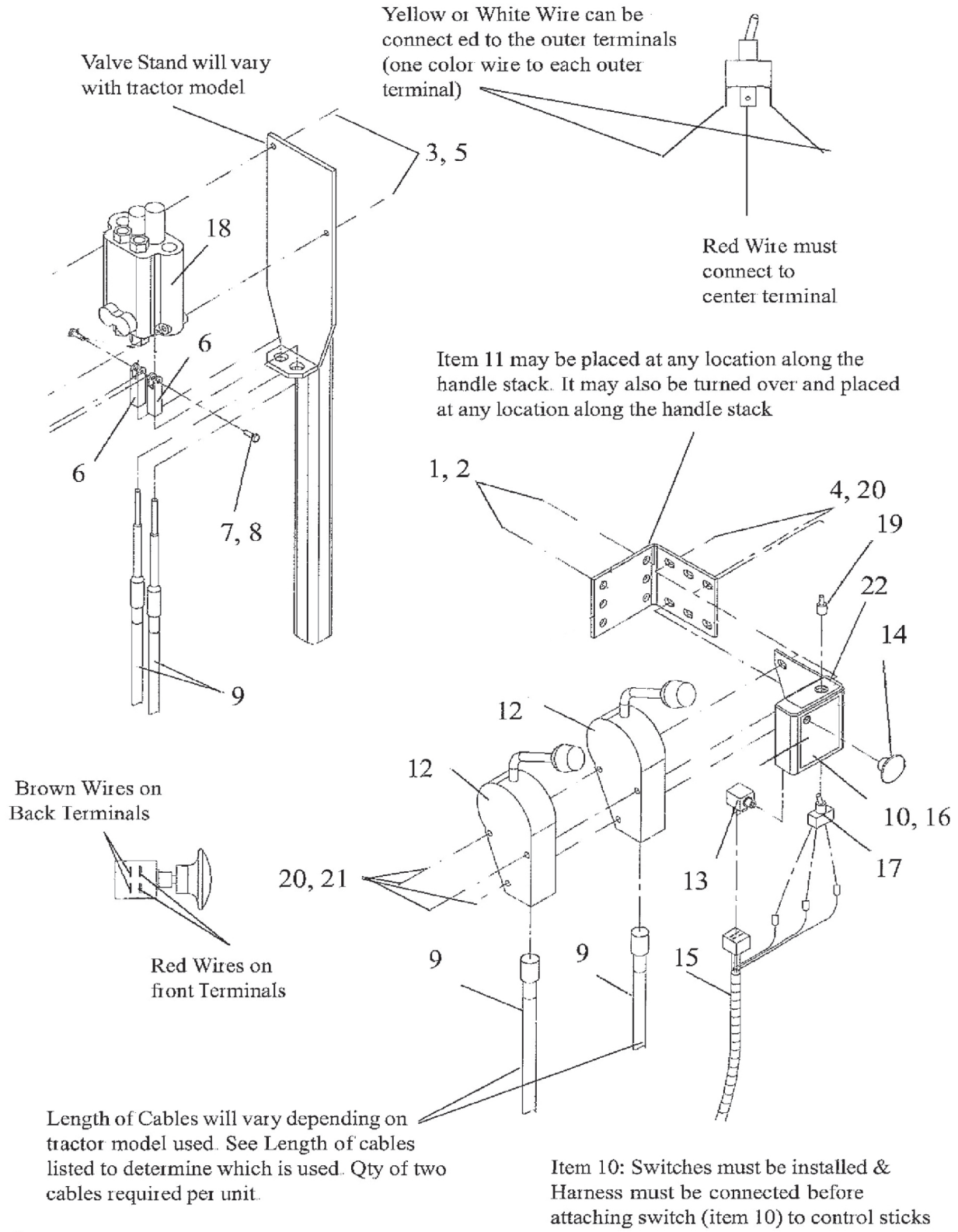
ITEM	PART NO.	QTY.	DESCRIPTION
----	34802974373	1	ASSEMBLY 6' SERR KNIFE BAR
1	34002982800	1	KNF SCTNS TOP SER CHR PL BX 25
4	34802974349	1	WELDMENT KNIFE HEAD
6	30002976271	7	HEAD BOLT 1-1/64 LONG
7	30002976272	50	SECTION LOCKNUT (CONE)
8	3300531900	1	BACKING STRIP 6'
5	30002976270	43	SECTION BOLT 5/8 LONG

WELDMENT KIFE HEAD - PN 34802974349



ITEM	PART NO.	QTY.	DESCRIPTION
1	34802974349	1	WELDMENT KNIFE HEAD
2	34802974316	1	INSERT NYLON DRIVE BRG CLAMP

HYD VALVE REMOTE CONTROL CABLES

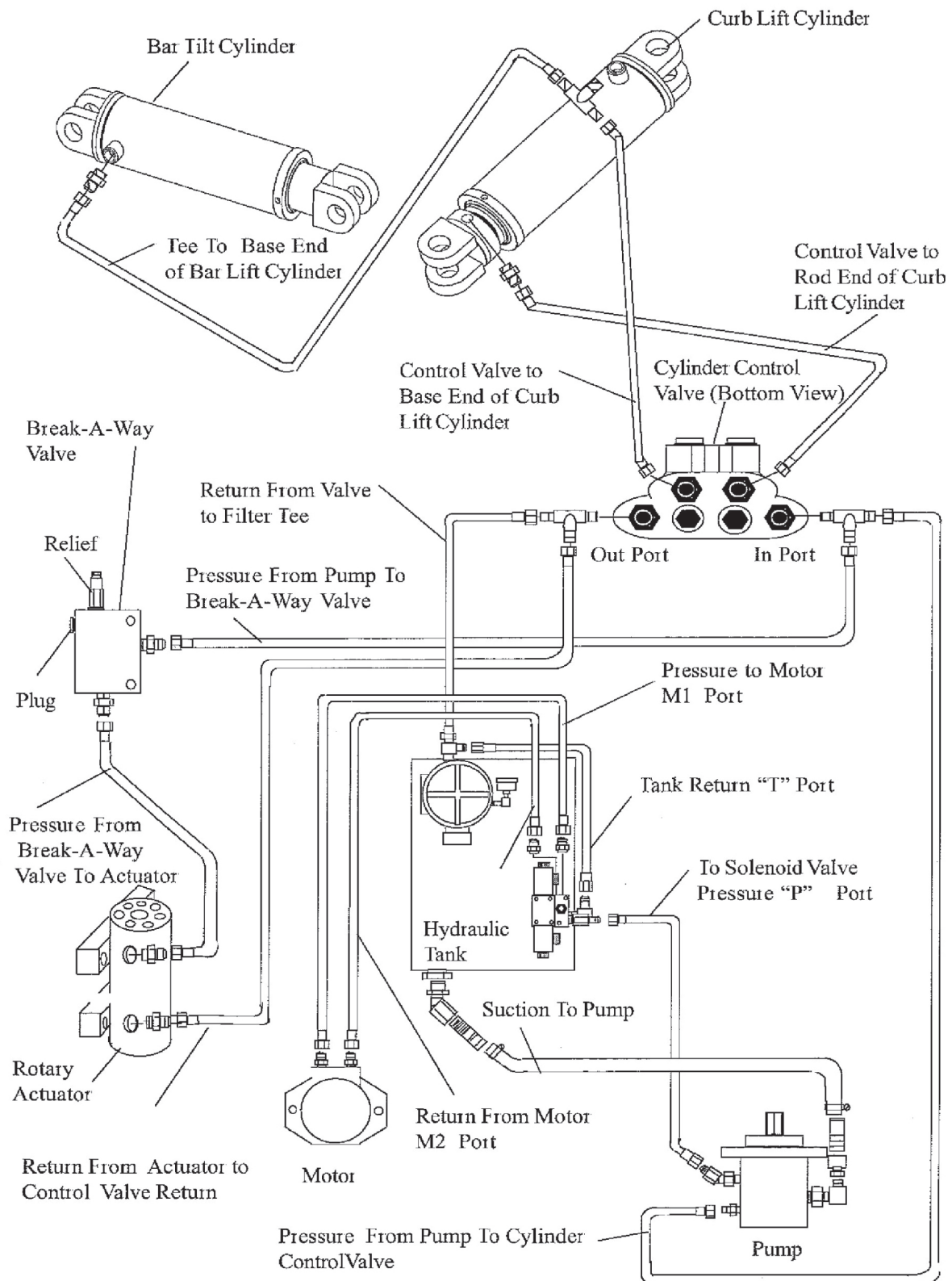


HYD VALVE REMOTE CONTROL CABLES

Continued...

ITEM	PART NO.	QTY.	DESCRIPTION
1	30000015800	2	LOCKNUT
2	300000354	2	BOLT
3	300001636	2	BOLT
4	30000750940	3	LOCKNUT
5	30002959924	2	LOCKNUT
6	32002966687	2	ADJUSTING YOKE END
7	30002966688	2	CLEVIS PIN
8	30002968698	2	COTTER PIN
9	32002971202	1	CABLE, REMOTE CONTROL - 72" LG
10	32002974296	1	SWITCH MOUNT WLD'MT
12	32002974323	2	ANGLED SINGLE AXIS CONTROL ASY.
13	32002964028	1	SWITCH, PUSH PULL
15	32002964318	1	RELIEF VALVE (SET @ 2500 PSI)
16	30002974321	1	DECAL INSTRUCT VALVE & SWITCH
17	32002974322	1	3 - POSITION TOGGLE SWITCH
18	32002982077	1	VALVE ASY, W/ FITTINGS
19	32002974962	1	BOOT, TOGGLE SWITCH COVER
20	30000023500	6	FLATWASHER
21	30002733700	3	BOLT
22	30002975270	1	DECAL INSTRUCTIONS, REVERSING SWITCH

HYD SCHEMATIC - SINGLE WG

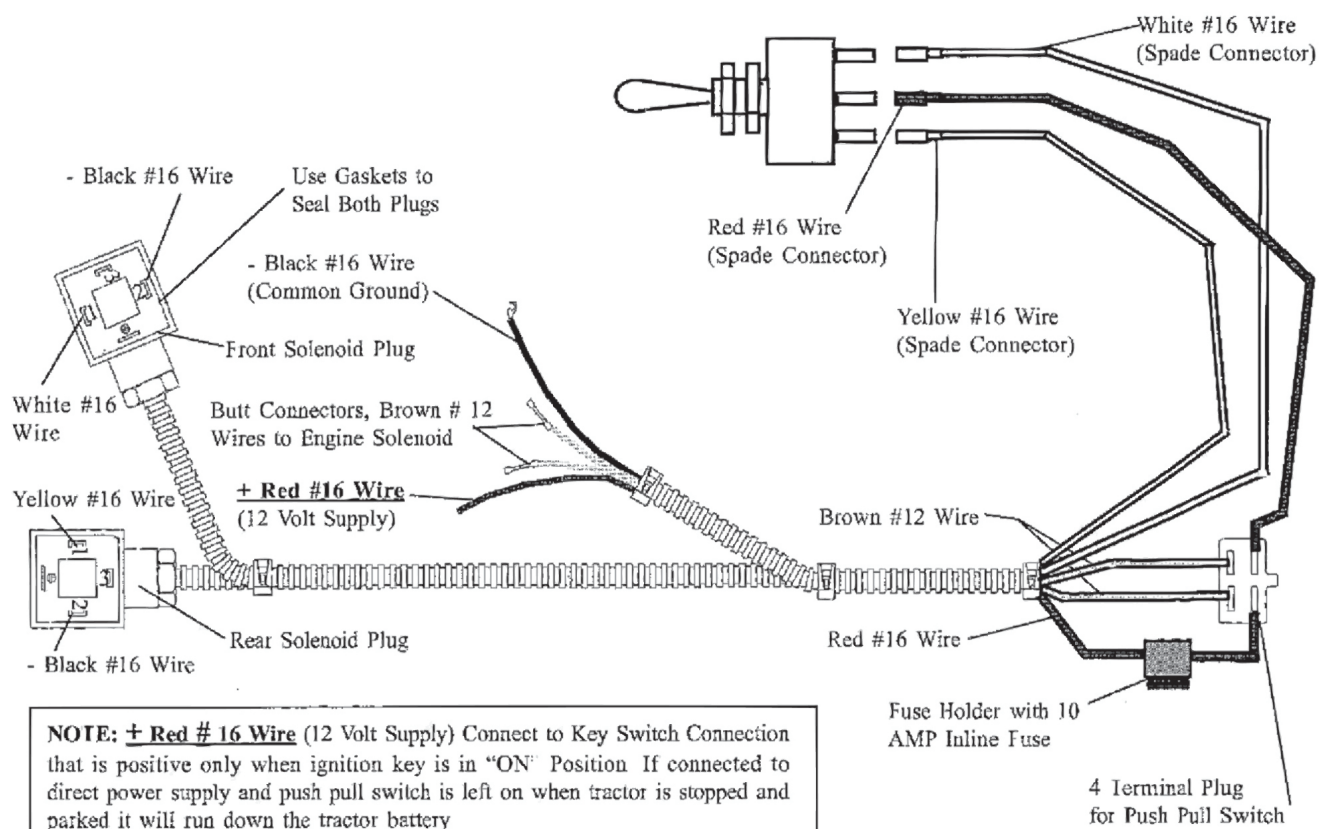


HYD SCHEMATIC - SINGLE WG

Continued...

ITEM	PART NO.	QTY.	DESCRIPTION
1	33802974302B	1	PUMP TANDEM GEAR, 1.16/0.49 CID
2	-----	1	HYDRAULIC TANK ASY. (VARIES BETWEEN TRACTOR MODELS)
3	3380693400A	1	CURB STOP CYLINDER ASY
4	3380693500A	1	BAR LIFT CYLINDER ASY
5	33002982296	1	BREAK-A-WAY VALVE ASY
6	34802981979	1	ROTARY ACTUATOR ASY.
7	33802974301	1	MOTOR, 2.8 CID

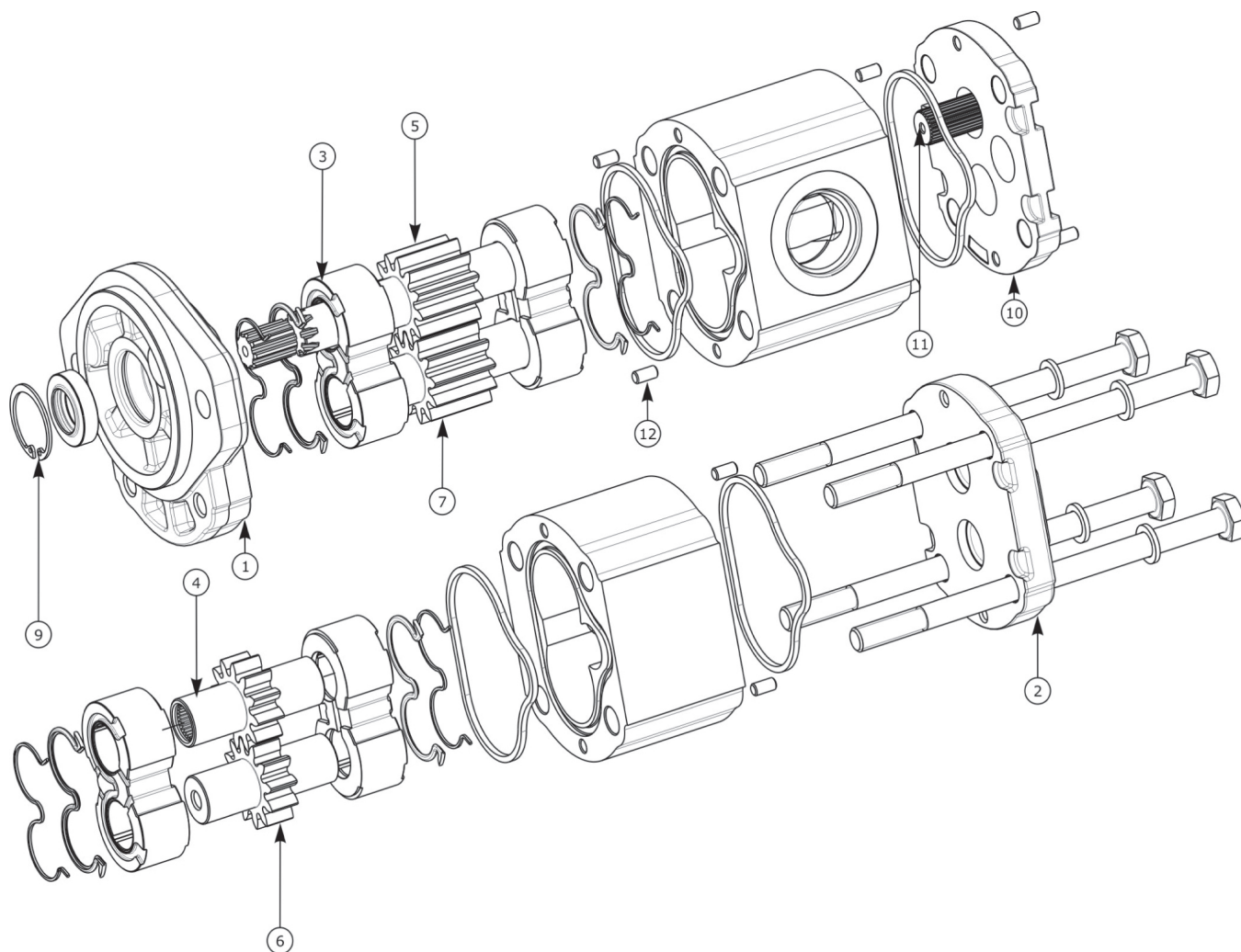
WIRING HARNESS - SINGLE WG - PN 32002974318



ITEM	PART NO.	QTY.	DESCRIPTION
----	32002974318	1	WIRE HARNESS SINGLE WING
1	320002504	2	CONNECTOR, COIL-HRSCHMANN TYPE
2	32002965731	1	FUSE 10 AMP, TYPE ATO

NOTE: THIS WIRE HARNESS IS USED WITH A RH WING MOWER, WIRE HARNESS WILL NOT INCLUDE PUSH PULL SWITCH OR TOGGLE SWITCH.

HYD PUMP ASY - PN 33802974302B



ITEM	PART NO.	QTY.	DESCRIPTION
----	33802974302B	1	PUMP TANDEM GEAR 1.16/.50 CID
1	33802985005	1	PUMP FLANGE
2	33802985006	1	REAR COVER
3	33802988046	4	THRUST PLATE
4	33002988047	1	DRIVE GEAR
5	33002988048	1	SHAFT, DRIVE GEAR
6	33002988049	1	DRIVEN GEAR
7	30002988050	1	SHAFT, DRIVEN GEAR
8	30002988051	1	KIT, M10 BOLT & WASHER, 4 EA.
9	30002985014	1	RETAINING RING
10	33002985015	1	MID-PLATE SPACER
11	33002985016	1	SPLINED CONNECTING SHAFT
12	30002985017	8	PIN, DOWEL
----	30002988051	1	BOLTS AND WASHERS KIT
	30002985018	1	SEAL KIT

TERRAIN KING

Limited Warranty

1. Limited Warranties

- 1.01. Terrain King ("Manufacturer") warrants for one year from the purchase date to the original non-commercial, governmental, or municipal purchaser and warrants for six months to the original commercial or industrial purchaser ("Purchaser", as applicable) that the goods purchased are free from defects in material or workmanship.
- 1.02. Manufacturer will replace for the Purchaser any part or parts found, upon examination at one of its factories, to be defective under normal use and service due to defects in material or workmanship during the applicable warranty period.
- 1.03. This limited warranty does not apply to any part of the goods which has been subjected to improper or abnormal use, negligence, alteration, modification, or accident, damaged due to lack of maintenance or use of wrong fuel, oil, or lubricants, or which has served its normal life. This limited warranty does not apply to any part of any internal combustion engine, or expendable items such as blades, shields, guards, or pneumatic tires except as specifically found in your operator's manual.
- 1.04. No employee, agent, dealer, or other person is authorized to give any warranties of any nature on behalf of Manufacturer.

2. Remedies And Procedures

- 2.01. This limited warranty is not effective unless the purchaser returns the registration and warranty form to Manufacturer within 30 days of purchase.
- 2.02. Purchaser claims must be made in writing to the authorized dealer ("dealer") from whom Purchaser purchased the goods or an approved authorized dealer ("dealer") within 30 days after Purchaser learns of the facts on which the claim is based.
- 2.03. Purchaser is responsible for returning the goods in question to the dealer.
- 2.04. If after examining the goods and/or parts in question, Manufacturer finds them to be defective under normal use and service due to defects in material or workmanship, Manufacturer will:
 - (A) repair or replace the defective goods or part(s) or
 - (B) reimburse Purchaser for the cost of the part(s) and reasonable labor charges (as determined by Manufacturer) if Purchaser paid for the repair and/or replacement prior to the final determination of applicability of the warranty by Manufacturer. The choice of remedy shall belong to Manufacturer.
- 2.05. Purchaser is responsible for any labor charges exceeding a reasonable amount as determined by Manufacturer and for returning the goods to the dealer, whether or not the claim is approved. Purchaser is responsible for the transportation cost for the goods or part(s) from the dealer to the designated factory.

3. Limitation Of Liability

- 3.01. MANUFACTURER DISCLAIMS ANY EXPRESS (EXCEPT AS SET FORTH HEREIN) AND IMPLIED WARRANTIES WITH RESPECT TO THE GOODS INCLUDING, BUT NOT LIMITED TO, MERCHANTABILITY AND FITNESS FOR A PARTICULAR PURPOSE.
- 3.02. MANUFACTURER MAKES NO WARRANTY AS TO THE DESIGN, CAPABILITY, CAPACITY, OR SUITABILITY FOR USE OF THE GOODS.
- 3.03. EXCEPT AS PROVIDED HEREIN, MANUFACTURER SHALL HAVE NO LIABILITY OR RESPONSIBILITY TO PURCHASER OR ANY OTHER PERSON OR ENTITY WITH RESPECT TO ANY LIABILITY, LOSS, OR DAMAGE CAUSED OR ALLEGED TO BE CAUSED DIRECTLY OR INDIRECTLY BY THE GOODS INCLUDING, BUT NOT LIMITED TO, ANY INDIRECT, SPECIAL, CONSEQUENTIAL, OR INCIDENTAL DAMAGES RESULTING FROM THE USE OR OPERATION OF THE GOODS OR ANY BREACH OF THIS WARRANTY. NOTWITHSTANDING THE ABOVE LIMITATIONS AND WARRANTIES, MANUFACTURER'S LIABILITY HEREUNDER FOR DAMAGES INCURRED BY PURCHASER OR OTHERS SHALL NOT EXCEED THE PRICE OF THE GOODS.
- 3.04. NO ACTION ARISING OUT OF ANY CLAIMED BREACH OF THIS WARRANTY OR TRANSACTIONS UNDER THIS WARRANTY MAY BE BROUGHT MORE THAN TWO (2) YEARS AFTER THE CAUSE OF ACTION HAS OCCURRED.

4. Miscellaneous

- 4.01. Proper venue for any lawsuits arising from or related to this limited warranty shall be only in Guadalupe County, Texas.
- 4.02. Manufacturer may waive compliance with any of the terms of this limited warranty, but no waiver of any terms shall be deemed to be a waiver of any other term.
- 4.03. If any provision of this limited warranty shall violate any applicable law and is held to be unenforceable, then the invalidity of such provision shall not invalidate any other provisions herein.
- 4.04. Applicable law may provide rights and benefits to Purchaser in addition to those provided herein.

Keep for your records

Attention: Purchaser should fill in the blanks below for his reference when buying repair parts and/or for proper machine identification when applying for warranty.

Terrain King Implement Model _____ Serial Number _____
Date Purchased _____ Dealer _____

Attention:
Read your operator's manual



Terrain King
1502 E WALNUT ST
SEGUIN TX 78155-5202
800-882-5756

TERRAINKING™

Engineering Practical Solutions™

TO THE OWNER/OPERATOR/DEALER

To keep your implement running efficiently and safely, read your manuals thoroughly and follow these directions and the Safety Messages in this Manual. The Table of Contents clearly identifies each section where you can easily find the information you need.

The OCCUPATIONAL SAFETY AND HEALTH ACT (1928.51 Subpart C) makes these minimum safety requirements of tractor operators:

REQUIRED OF THE OWNER

1. Provide a Roll-Over-Protective Structure that meets the requirements of this standard.
2. Provide seat belts that meet the requirements of this paragraph of this standard and SAE J4C.
3. Ensure that each employee uses such seat belt while the tractor is moving.
4. Ensure that each employee tightens the seat belt sufficiently to confine the employee to the protected area provided by the ROPS.

REQUIRED OF THE OPERATOR

1. Securely fasten seat belt if the tractor has a ROPS.
2. Where possible, avoid operating the tractor near ditches, embankments, and holes.
3. Reduce speed when turning, crossing slopes, and on rough, slick, or muddy surfaces.
4. Stay off slopes too steep for safe operation.
5. Watch where you are going, especially at row ends, on roads, and around trees.
6. Do not permit others to ride.
7. Operate the tractor smoothly, no jerky turns, starts, or stops.
8. Hitch only to the draw bar and hitch points recommended by the tractor manufacturer.
9. When the tractor is stopped, set brakes securely and use park lock, if available.



Keep children away from danger all day, every day...



Equip tractors with rollover protection (ROPS) and keep all machinery guards in place...



Please work, drive, play and live each day with care and concern for your safety and that of your family and fellow citizens.

